



# ULM Warhawks Men's Basketball

## University of Louisiana at Monroe



ULM (13-8, 7-3 SBC)  
**WARHAWKS**

Vs.

South Alabama  
**JAGUARS**

(7-14, 5-5 SBC)



Game 22

Saturday, Jan. 31, 2015 • 4:00 p.m.

Fant-Ewing Coliseum (7,000) • Monroe, La.

Live Stream: Warhawks All-Access (Online Only)

Radio: KLIP LA 105.3 FM, Nick White (PXP)

Twitter: @ULM\_MBB

### ULM Quick Notes

- The Warhawks are looking to win their third consecutive game against South Alabama after sweeping the season series last year. ULM won 64-58 on the road and 71-54 at home

- ULM is coming off a 58-55 overtime win over Troy on Thursday. ULM trailed by 10 at halftime and 13 in the second half before mounting a comeback. The Warhawks swept the season series over Troy for the first time in school history (ULM joined the SBC in 2005-06)

- It marked the second time this season that the Warhawks erased a 13-point second half deficit to come back and win in overtime. They did the same thing at UT Arlington on Jan. 8 for a 76-71 win. Keith Richard is 19-8 all-time in overtime in his head coaching career

- The Warhawks enter Saturday 0.5 games out of first-place behind Georgia Southern and tied with Georgia State in second-place. They are off to their best conference start since 2006-07 when they went on to earn SBC West Division Co-Champions

- ULM has won four straight road games for the first time since 1998-99

- The Warhawks are 8-2 at home this season and 398-171 all-time in Fant-Ewing Coliseum

- ULM shot up to the top of the standings after winning six straight conference games this season. It was the most consecutive SBC victories in school history. It was also the most league wins in-a-row since 1998-99 when it was a member of the Southland Conference

- The Warhawks have already matched their conference win total from last season and have surpassed their overall win total by three games when they finished 10-17 (7-11 SBC)

- ULM is the only team in the SBC that has not allowed 75 points in a single game this season. It is also one of nine teams left in the nation to accomplish that. The list also includes Cincinnati, New Mexico, George Washington, Oregon State, Saint Peters, Utah, Baylor, New Hampshire

- The Warhawks are 10-0 on the season when they have at least three double-figure scorers and 6-0 when they shoot over 50 percent from the field

### ULM MEN'S BASKETBALL SCHEDULE

Sat, Nov. 15	# at UAB	W, 74-65
<b>Mon, Nov. 17</b>	<b>Champion Baptist</b>	<b>W, 106-39</b>
Fri, Nov. 21	# at No. 8 Florida	L, 61-56 (OT)
Wed, Nov. 26	# vs. Coastal Carolina	L, 61-48
Thurs, Nov. 27	# vs. Robert Morris	L, 71-54
<b>Sat, Dec. 6</b>	<b>Louisiana College</b>	<b>W, 83-55</b>
<b>Tues, Dec. 9</b>	<b>Northwestern State</b>	<b>W, 82-74</b>
Sat, Dec. 13	at New Mexico	L, 54-46
<b>Tues, Dec. 16</b>	<b>Central Baptist</b>	<b>W, 78-53</b>
<b>Fri, Dec. 19</b>	<b>LSU-Alexandria</b>	<b>W, 76-71</b>
Sun, Dec. 21	at Samford	L, 64-50
Tues, Dec. 30	at Georgia State*	L, 65-45
<b>Mon, Jan. 5</b>	<b>Arkansas State*</b>	<b>W, 70-61</b>
Thurs, Jan. 8	at UT Arlington*	W, 76-73 (OT)
Sat, Jan. 10	at Texas State*	W, 62-59
<b>Thurs, Jan. 15</b>	<b>Troy*</b>	<b>W, 63-54</b>
<b>Sat, Jan. 17</b>	<b>UALR*</b>	<b>W, 64-52</b>
Mon, Jan. 19	at UL-Lafayette*	W, 57-55
<b>Thurs, Jan. 22</b>	<b>UT Arlington*</b>	<b>L, 61-57</b>
<b>Sat, Jan. 24</b>	<b>Georgia Southern*</b>	<b>L, 57-53</b>
Thurs, Jan. 29	at Troy*	W, 58-55
<b>Sat, Jan. 31</b>	<b>South Alabama*</b>	<b>4:00 PM</b>
Thurs, Feb. 5	at UALR*	7:30 PM
Sat, Feb. 7	at Georgia Southern*	6:30 PM
<b>Thurs, Feb. 12</b>	<b>UL-Lafayette*</b>	<b>7:00 PM</b>
<b>Sat, Feb. 14</b>	<b>Appalachian State*</b>	<b>2:00 PM</b>
Sat, Feb. 21	at Arkansas State*	7:05 PM
Thurs, Feb. 26	at South Alabama*	7:05 PM
Sat, Feb. 28	at Appalachian State*	2:30 PM
<b>Thurs, March 5</b>	<b>Georgia State*</b>	<b>7:00 PM</b>
<b>Sat, March 7</b>	<b>Texas State*</b>	<b>4:00 PM</b>
Thurs, March 12	SBC Championships%	TBA

All times Central and subject to change. **Bold** indicates home game; \*-Sun Belt game; %-SBC Tournament; #Battle 4 Atlantis

**We are ULM.** Please note that there are only two correct versions of our institution's name, the preferred acronym ULM and the full name, the University of Louisiana at Monroe. Any other reference, including Louisiana-Monroe, UL-Monroe, La.-Monroe, LAM, or simply Monroe, are incorrect.

### Media Relations Contacts

Robbie Kleinmuntz (Primary)	Michael Garabedian
Assistant Director	Graduate Assistant
kleinmuntz@ulm.edu	garabemc@warhawks.ulm.edu
O: 318-342-5462	O: 318-342-5461
C: 847-912-5380	C: 305-926-8420



# ULM Warhawks Men's Basketball

## University of Louisiana at Monroe



**Keith Richard**  
Head Coach

Fifth Year at ULM  
14th Season Overall

Alma Mater: ULM (1982)

### THE RICHARD FILE

#### COACHING HONORS

- 1999 Sun Belt Coach of the Year
- Has been part of the coaching staff for seven NCAA Tournament and three NIT teams

#### COACHING CAREER

Season	School	Position	Record
1984-85	ULM	Graduate Assistant	17-12
1985-86	ULM	Graduate Assistant	20-10/NCAA
1986-87	Marshall	Assistant Coach	25-6/NCAA
1987-88	Marshall	Assistant Coach	24-8/NIT
1988-89	Marshall	Assistant Coach	15-15
1989-90	ULM	Assistant Coach	22-8/NCAA
1990-91	ULM	Assistant Coach	25-8/NCAA
1991-92	ULM	Assistant Coach	19-10/NCAA
1992-93	ULM	Assistant Coach	26-5/NCAA
1993-94	ULM	Assistant Coach	19-9
1994-95	La. Tech	Assistant Coach	14-13
1995-96	La. Tech	Associate Head Coach	11-17
1996-97	La. Tech	Associate Head Coach	15-14
1997-98	La. Tech	Associate Head Coach	12-15
1998-99	La. Tech	Head Coach	19-9
1999-00	La. Tech	Head Coach	21-8
2000-01	La. Tech	Head Coach	17-12
2001-02	La. Tech	Head Coach	22-10/NIT
2002-03	La. Tech	Head Coach	12-15
2003-04	La. Tech	Head Coach	15-15
2004-05	La. Tech	Head Coach	14-15
2005-06	La. Tech	Head Coach	20-13/NIT
2006-07	La. Tech	Head Coach	10-20
2008-09	LSU	Assistant Coach	27-8/NCAA
2009-10	LSU	Assistant Coach	11-20
2010-11	ULM	Head Coach	7-24
2011-12	ULM	Head Coach	3-26
2012-13	ULM	Head Coach	4-23
2013-14	ULM	Head Coach	10-17
2014-15	ULM	Head Coach	13-8

#### PLAYING CAREER

- Played for ULM from 1978-82; Coached by Lenny Fant, Benny Hollis & Mike Vining
- 1979 Atlantic Sun Tournament Champions, NIT
- 1980 Atlantic Sun Regular Season Champions
- 1982 Atlantic Sun Tournament Champions, NCAA
- Two-time team captain ('81 & '82)
- Led team in assists twice

#### EDUCATION

- Bachelor's degree in general business, ULM (1982)
- Master's degree in guidance counseling, ULM (1986)

### ULM Quick Notes Continued...

- On the year, the Warhawks enter the game ranking first in the league in field goal percentage defense (.375), three-point percentage defense (.285) and blocks (4.8 bpg). The FG% defense and 3FG% defense are also both top-15 in the nation

- In SBC games only, the Warhawks lead the league in defensive rebounding percentage (.744) and are second in scoring defense (59.2 ppg), field goal percentage defense (.383) and three-point percentage defense (.289)

- Senior Tylor Ongwae leads the team in both scoring and rebound with 13.4 and 6.9 per outing, respectively. He ranks second in the league in free throw percentage at .863 (69-80).

- In conference games only, senior Marvin Williams is the team leader with 11.6 points per game. He leads the league in field goal percentage at a .649 mark

- Junior Majok Deng is coming off a 15-point performance at Troy and averages 9.1 points per game. He ranks second in the league in blocks (1.7 bpg) and third in defensive rebounds (5.0 drpg)

- Sophomore Nick Coppola ranks third in the league in assist:turnover ratio (2.2) and assists (4.1 apg). He has played at least 40 minutes six times this year and 15 times in his career. Coppola averages 8.6 points per game on the season

- Junior Mack Foster is coming off a career-high 15 points against the Trojans in a career-high 33 minutes. He drained five field goals including a trio of three-pointers

- Williams played a huge role in beginning the six-game winning streak for ULM. After the first three victories, he was named Sun Belt Conference Player of the Week and Co-Louisiana Player of the Week on Jan. 12, 2015. Williams shot 26-33 (.798) and averaged 20.7 points over the 3-0 week. He posted a career-high 22 points against Red Wolves and then matched his scoring and rebounding highs with 22 and 13 against the Mavs, respectively

- Williams' Player of the Week honors came on a stretch of three games in five days where the Warhawks went undefeated

- ULM has had five different players tally a double-double and eight different players reach double-figure scoring in a game this season

- Ongwae won Co-Louisiana Player of the Week on Dec. 22, 2014 and Sun Belt Conference Player of the Week on Nov. 18, 2014. He was named to the Preseason All-SBC Second-Team after earning four postseason awards in 2013-14

- The Warhawks have had two different players earn SBC Player of the Week honors in the same season for the first time in school history. ULM joined the league in 2005-06

- ULM closed out non-conference play with a winning record for the first time since 2007-08

- Earlier this season, ULM took eighth-ranked Florida to overtime. Coppola hit a three-pointer with 19 seconds left to level the score at 51. ULM led 54-53 with 3:00 remaining in overtime after a three-point play from Ongwae

- The 61 points allowed versus No. 8 Florida was the lowest ULM has ever let up against a ranked opponent in program history

- ULM hung around in front of 13,710 fans at The Pit against New Mexico in



# ULM Warhawks Men's Basketball

## University of Louisiana at Monroe



### ULM Quick Notes Continued...

a closely contested 54-46 decision. ULM went on an 11-0 run in the second half to make it a six-point game with 3:48 remaining

- The Warhawks posted a historic 106-39 victory over Champion Baptist in their home opener. The 67-point win broke the school record for largest margin of victory. It was also the most points ULM scored in a game since Feb. 17, 2001 in a game against UTSA. Additionally, the 67-point victory is the largest of any game in the Sun Belt Conference this season

- The Warhawks followed it up with a 28-point home win over Louisiana College as both Deng and Coppola recorded double-doubles

- ULM has had two players tally double-doubles in the same game twice this season, both at home (against La. College and Northwestern St.)

- Coppola dished out a career-high 12 assists against Louisiana College in a double-double. Coppola started all 27 games last year at point guard as a true freshman and has started every game of his career

- The Warhawks opened the season with a 74-65 victory on the road over UAB. It was the first opening night victory for ULM since Nov. 14, 2008 when it defeated Morehead State, 56-54 and the first opening night road win since Nov. 23, 1999 when it won at Samford, 67-60. Additionally, it was the largest opening night road victory since Dec. 1, 1979 when it beat Nicholls State, 79-69

- ULM has 15 home games on the 2014-15 schedule, the most since 1985-86

- Keith and Lance Richard have gone up against four other father/son duos this season. The Richard's took on Josiah/Eric Capaci at Champion Baptist, Billy/Billy Donovan at Florida, Cullen/Craig Neal at New Mexico and Ron/R.J. Hunter at Georgia State

- The Warhawks were tabbed for sixth in the Sun Belt Conference Preseason Poll. They return three starters and six players overall on a team that more-than doubled both its overall and conference win totals

- Last season, Williams notched a 19-point performance against No. 5 Kansas and outscored both Andrew Wiggins and Joel Embiid, the first and third picks of the NBA draft

- The Warhawks enter the 2014-15 season without any APR penalties for the first time in five years. ULM head coach Keith Richard has turned the program around academically since inheriting APR sanctions when he took over at the helm, and the Warhawks have won back-to-back Sun Belt Conference academic awards

- For the first time since the NCAA instituted academic progress rate (APR) scores in 2003-04, the ULM men's basketball program tallied a perfect 1,000 score in the 2013-14 season. Over the summer, ULM was the only Division I institution in the state of Louisiana to earn the Team Academic Excellence award from the NABC

- On Jan. 24, 2015, legendary former head coach Mike Vining was honored at halftime in the game against Georgia Southern with the raising of a "402" banner. It represents his total number of regular season and postseason victories at ULM over 24 seasons at the helm

## HOME COURT ADVANTAGE

### 398-171 All-Time in Fant-Ewing Coliseum

#### ULM RECORDS IN FANT-EWING

Year	Games	Record	Pct.	Avg. Attend.
1971-72	10	6-4	.600	4,190
1972-73	11	8-3	.727	3,232
1973-74	11	8-3	.727	3,250
1974-75	12	11-1	.917	3,454
1975-76	13	10-3	.769	5,451
1976-77	13	9-4	.692	5,073
1977-78	13	10-3	.769	4,459
1978-79	16	15-1	.937	5,215
1979-80	14	10-4	.714	3,678
1980-81	16	8-8	.500	3,067
1981-82	16	13-3	.812	3,808
1982-83	14	12-2	.857	2,946
1983-84	16	11-5	.688	2,098
1984-85	13	9-4	.692	2,380
1985-86	15	14-1	.933	2,114
1986-87	13	8-5	.615	2,582
1987-88	12	10-2	.833	2,582
1988-89	12	8-4	.667	2,861
1989-90	14	13-1	.928	2,949
1990-91	14	14-0	1.000	3,327
1991-92	12	9-3	.750	2,710
1992-93	14	14-0	1.000	3,892
1993-94	14	10-4	.714	3,351
1994-95	12	9-3	.750	3,619
1995-96	11	8-3	.727	2,182
1996-97	12	9-3	.750	1,822
1997-98	11	7-4	.636	1,301
1998-99	11	7-4	.636	1,913
1999-00	14	11-3	.786	2,003
2000-01	13	9-4	.692	935
2001-02	12	12-0	1.000	3,437
2002-03	12	7-5	.583	1,412
2003-04	13	9-4	.692	1,624
2004-05	13	6-7	.462	1,296
2005-06	13	8-5	.615	793
2006-07	14	14-0	1.000	1,952
2007-08	12	5-7	.417	1,338
2008-09	14	8-6	.571	907
2009-10	14	8-6	.571	1,398
2010-11	13	4-9	.308	1,400
2011-12	13	0-13	.000	1,438
2012-13	12	3-9	.250	1,255
2013-14	12	6-6	.500	1,513
2014-15	10	8-2	.889	1,483
TOTALS	569	398-171	.699	



# ULM Warhawks Men's Basketball

## University of Louisiana at Monroe



### WE ARE ULM

#### 12 REGULAR SEASON CHAMPIONSHIPS

1961-62 - Gulf States Conference  
 1964-65 - Gulf States Conference  
 1978-79 - Atlantic Sun Conference  
 1979-80 - Atlantic Sun Conference  
 1985-86 - Southland Conference  
 1989-90 - Southland Conference  
 1990-91 - Southland Conference  
 1992-93 - Southland Conference  
 1993-94 - Southland Conference  
 1995-96 - Southland Conference  
 1996-97 - Southland Conference  
 2006-07 - Sun Belt Conference West Division

#### NINE POST-SEASON APPEARANCES

1978-79 - NIT  
 1981-82 - NCAA Tournament  
 1985-86 - NCAA Tournament  
 1987-88 - NIT  
 1989-90 - NCAA Tournament  
 1990-91 - NCAA Tournament  
 1991-92 - NCAA Tournament  
 1992-93 - NCAA Tournament  
 1995-96 - NCAA Tournament

#### EIGHT TOURNAMENT CHAMPIONSHIPS

1978-79 - Atlantic Sun Conference  
 1981-82 - Atlantic Sun Conference  
 1985-86 - Southland Conference  
 1989-90 - Southland Conference  
 1990-91 - Southland Conference  
 1991-92 - Southland Conference  
 1992-93 - Southland Conference  
 1995-96 - Southland Conference

### Numerical Roster

No.	Player	Pos.	Ht.	Wt.	Cl.	Hometown (Previous School)
0	Williams, Marvin	C	6-8	245	Sr.	Memphis, Tenn. (NW Florida State College)
1	Brown, Alex	G	6-4	185	Fr.	Vernon, Fla. (Vernon HS)
2	Harvey, DeMondre	F	6-7	210	Jr.	Minden, La. (Pearl River CC)
3	Cooper, Prince	G	6-4	215	So.	Freeport, Bahamas (Miami-Dade College)
4	Foster, Mack	G	6-2	185	Jr.	Beulah, Miss. (East Mississippi CC)
5	Samuel, Jamaal	F	6-9	205	Jr.	New Orleans, La. (Illinois State)
10	Taylor, Roderick	F	6-8	210	Fr.	Harker Heights, Texas (Harker Heights HS)
11	Coppola, Nick	G	5-11	190	So.	Richmond, Va. (Benedictine Prep)
12	Ongwae, Tylor	F	6-7	205	Sr.	Eldoret, Kenya (Ranger College)
13	Deng, Majok	F	6-10	190	Jr.	Adelaide, Australia (Indian Hills CC)
20	Amajoyi, Chinedu	G	6-3	195	Sr.	Rancho Cucamonga, Calif. (Kilgore College)
22	Richard, Lance	G	5-10	175	RFr.	Monroe, La. (Sterlington HS)
32	Roberson, Justin	G	6-1	185	Jr.	Natchitoches, La. (Western Texas)

### COACHING STAFF

Head Coach: Keith Richard (ULM '82)  
 Assistant Coach: Ryan Cross (Buffalo '95)  
 Assistant Coach: Lonnie Cooper (Louisiana Tech '99)

Assistant Coach: J.A. Anglin (LSU Shreveport '10)  
 Graduate Assistant: Luke Richard  
 Team Manager: Gil Williams

### PRONUNCIATION

Keith/Lance/Luke RICHARD    Ree-SHARD  
 CHINEDU AMAJOYI    Chin-ih-due Om-uh-joy  
 TYLOR ONGWAE    Tie-ler Ong-why  
 MAJOK Deng    Muh-jook  
 Justin ROBERSON    Rob-er-sin  
 Nick COPPOLA    Cuh-pole-uh



### BY CLASS

Seniors (3)..... Chinedu Amajoyi  
 ..... Tylor Ongwae  
 ..... Marvin Williams  
 Juniors (5) ..... Majok Deng  
 ..... Mack Foster  
 ..... DeMondre Harvey  
 ..... Justin Roberson  
 ..... Jamaal Samuel  
 Sophomores (2) ..... Prince Cooper  
 ..... Nick Coppola  
 Freshmen (3)..... Alex Brown  
 ..... Lance Richard  
 ..... Roderick Taylor

### BY POSITION

Guards (7) ..... Chinedu Amajoyi  
 ..... Alex Brown  
 ..... Prince Cooper  
 ..... Nick Coppola  
 ..... Mack Foster  
 ..... Lance Richard  
 ..... Justin Roberson  
 Forwards (5)..... Majok Deng  
 ..... DeMondre Harvey  
 ..... Tylor Ongwae  
 ..... Jamaal Samuel  
 ..... Roderick Taylor  
 Center (1) ..... Marvin Williams

### BY STATE/COUNTRY

Australia..... Majok Deng  
 Bahamas ..... Prince Cooper  
 California..... Chinedu Amajoyi  
 Florida..... Alex Brown  
 Kenya ..... Tylor Ongwae  
 Louisiana (4) ..... DeMondre Harvey  
 ..... Lance Richard  
 ..... Justin Roberson  
 ..... Jamaal Samuel  
 Mississippi..... Mack Foster  
 Tennessee ..... Marvin Williams  
 Texas ..... Roderick Taylor  
 Virginia ..... Nick Coppola





# ULM Warhawks Men's Basketball

## University of Louisiana at Monroe



### ULM Quick Facts

Location \_\_\_\_\_ Monroe, La.  
 Enrollment \_\_\_\_\_ 8,527  
 Founded \_\_\_\_\_ 1931  
 Nickname/Mascot \_\_\_\_\_ Warhawks/Ace  
 Colors \_\_\_\_\_ Maroon & Gold  
 President \_\_\_\_\_ Dr. Nick Bruno  
 Director of Athletics \_\_\_\_\_ Brian Wickstrom  
 Conference \_\_\_\_\_ Sun Belt  
 Affiliation \_\_\_\_\_ NCAA Division I  
 All-Time Record \_\_\_\_\_ 923-822 (63rd season)  
 Winning Seasons \_\_\_\_\_ 38 (20+ wins 10 times)  
 Home Venue \_\_\_\_\_ Fant-Ewing Coliseum (7000)  
 Playing Surface \_\_\_\_\_ Maple  
 Opened \_\_\_\_\_ 1971  
 Press Row Phone \_\_\_\_\_ 318-342-6920

Head Coach \_\_\_\_\_ Keith Richard  
 Record at ULM \_\_\_\_\_ 37-98 (fifth year)  
 Career Record \_\_\_\_\_ 187-215 (14th year)  
 Assistant Coach \_\_\_\_\_ Ryan Cross  
 Assistant Coach \_\_\_\_\_ Lonnie Cooper  
 Assistant Coach \_\_\_\_\_ J.A. Anglin  
 Graduate Assistant \_\_\_\_\_ Luke Richard  
 Team Manager \_\_\_\_\_ Gil Williams  
 Athletic Trainer \_\_\_\_\_ Jeremy Teblum

Website \_\_\_\_\_ www.ulmwarhawks.com  
 Facebook \_\_\_\_\_ www.facebook.com/warhawks  
 Twitter \_\_\_\_\_ @ULM\_MBB

### Scouting South Alabama

At the halfway point of conference play, the Jaguars are 5-5 in the league and 7-14 overall. They are coming off an 89-85 win at home on Thursday against UL-Lafayette after the Ragin' Cajuns led by 10 at halftime. USA swept the season series over UL-Lafayette.

Ken Williams leads the team with 15.0 points per game on the year. He's the top three-pointer shooter in the conference in SBC games only at .456 (26-57). Taishaun Johnson shoots .400 (14-35) and scores 13.1 per game. USA enters the game as the top three-point shooting team in the league at a remarkable .415 clip.

Dionte Ferguson is the team's leading rebounder with 6.8 per game and also puts in 11.1 points per outing.

Enter his second season as head coach, Matthew Graves made it top priority to change the culture at South Alabama. He brought with him 17 years of success at Butler University, both as a student-athlete and coach. Graves overhauled the team on and off the court last year, resulting in the team's highest GPA in five seasons.

During his tenure at Butler, Graves helped the program to an overall record of 244-98 (71.3%), a berth in national postseason tournaments each of the last eight seasons and eight straight years with 20-plus victories. Following the 2009-10 campaign that saw the Bulldogs finish 33-5 after falling to Duke 61-59 in the national title contest, he was promoted to associate head coach.

### All-Time Series History vs. South Alabama

South Alabama leads, 10-6

At ULM: USA leads, 5-3

At USA: USA leads, 5-2

On Neutral Courts: ULM leads, 1-0

### ULM's Record by Starting Lineup

Coppola-Foster-Ongwae-Deng-Williams (6-2, 6-2 SBC)  
 Coppola-Roberson-Ongwae-Deng-Williams (3-4, 1-0 SBC)  
 Coppola-Roberson-Ongwae-Deng-Harvey (3-1, 0-0 SBC)  
 Coppola-Roberson-Ongwae-Samuel-Deng (1-0, 0-0 SBC)  
 Coppola-Amajoyi-Ongwae-Samuel-Harvey (0-1, 0-1 SBC)

### Where ULM Ranks Nationally...

12th in 3FG% defense (.285)

13th in FG% defense (.375)

39th in total blocks (100)

39th in scoring defense (60.0 ppg)

40th in defensive rebs (26.2 drpg)

### 2014-15 SBC Preseason

**Poll** (First-place votes in parenthesis)

- Georgia State 121 (11)
- UL-Lafayette 110
- UALR 94
- UT Arlington 75
- Arkansas State 73
- ULM 69**
- Texas State 43
- Troy 42
- Georgia Southern 38
- South Alabama 38
- Appalachian State 23

### SUN BELT CONFERENCE PRESEASON TEAMS

#### Preseason First Team All-Conference

Jelani Hewitt (Georgia Southern, Senior, Guard)  
 Ryan Harrow (Georgia State, Senior, Guard)  
 R.J. Hunter (Georgia State, Junior, Guard)  
 Shawn Long (UL Lafayette, Senior, Forward)  
 Lonnie McClanahan (UT Arlington, Senior, Guard)

#### Preseason Second Team All-Conference

Josh Hagins (UALR, Junior, Guard)  
 James White (UALR, Junior, Forward)  
 Xavian Rimmer (UL Lafayette, Senior, Guard)  
**Tylor Ongwae (ULM, Senior, Forward)**  
 Emani Grant (Texas State, Junior, Forward)

#### Preseason Third Team All-Conference

Tab Hamilton (Appalachian State, Senior, Guard)  
 Trent Wiedeman (Georgia Southern, Senior, Guard)  
 Curtis Washington (Georgia State, Senior, Forward)  
 Jamel Outler (UT Arlington, Senior, Guard)  
 Kevin Thomas (Troy, Senior, Forward)

#### Preseason Player of the Year

R.J. Hunter (Georgia State, Junior, Guard)



**SUN BELT**  
CONFERENCE



# ULM Warhawks Men's Basketball

## University of Louisiana at Monroe



### 2014-15 ULM MEN'S BASKETBALL

#### ULM Combined Team Statistics (as of Jan 29, 2015)

#### All games

Overall Stats

RECORD:	OVERALL	HOME	AWAY	NEUTRAL
ALL GAMES	13-8	8-2	5-4	0-2
CONFERENCE	7-3	3-2	4-1	0-0
NON-CONFERENCE	6-5	5-0	1-3	0-2

#	Player	gp-gs	min	avg	Total		3-Point		F-Throw		Rebounds				pf	dq	a	to	blk	stl	pts	avg
					fg-fga	fg%	3fg-fga	3fg%	ft-fa	ft%	off	def	tot	avg								
12	Ongwae, Tylor	21-21	699	33.3	104-243	.428	5-32	.156	69-80	.863	55	90	145	6.9	51	2	56	41	9	16	282	13.4
13	Deng, Majok	21-20	584	27.8	67-149	.450	23-65	.354	37-51	.725	36	104	140	6.7	40	0	26	30	36	12	194	9.2
00	Williams, Marvin	20-15	451	22.6	71-122	.582	1-3	.333	32-51	.627	35	59	94	4.7	46	1	9	34	18	8	175	8.8
32	Roberson, Justin	21-12	543	25.9	70-171	.409	5-26	.192	36-50	.720	11	67	78	3.7	51	4	45	38	4	24	181	8.6
11	Coppola, Nick	21-21	728	34.7	65-166	.392	28-84	.333	23-36	.639	3	54	57	2.7	41	1	83	37	0	20	181	8.6
05	Samuel, Jamaal	21-2	344	16.4	47-128	.367	18-65	.277	10-16	.625	13	56	69	3.3	33	0	8	21	19	9	122	5.8
04	Foster, Mack	21-8	386	18.4	43-111	.387	15-55	.273	10-19	.526	9	28	37	1.8	33	1	26	14	4	15	111	5.3
02	Harvey, DeMondre	21-5	286	13.6	27-46	.587	0-0	.000	13-23	.565	26	38	64	3.0	22	0	9	12	8	4	67	3.2
22	Richard, Lance	14-0	49	3.5	7-25	.280	6-23	.261	0-0	.000	1	5	6	0.4	4	0	0	2	1	2	20	1.4
03	Cooper, Prince	14-0	111	7.9	7-16	.438	0-0	.000	1-8	.125	6	13	19	1.4	5	0	9	8	1	2	15	1.1
20	Amajoyi, Chinedu	12-1	94	7.8	4-17	.235	0-7	.000	2-2	1.000	1	7	8	0.7	7	0	12	7	0	1	10	0.8
Team											34	29	63					4				
Total.....		21	4275		512-1194	.429	101-360	.281	233-336	.693	230	550	780	37.1	333	9	283	248	100	113	1358	64.7
Opponents.....		21	4279		446-1189	.375	114-400	.285	254-351	.724	229	505	734	35.0	314	-	239	250	70	123	1260	60.0

TEAM STATISTICS			ULM	OPP	Date	Opponent	Score	Att.
SCORING			1358	1260	11/15/14	at UAB	W 74-65	2403
Points per game			64.7	60.0	11/17/14	CHAMPION BAPTIST	W 106-39	1078
Scoring margin			+4.7	-	11/21/14	at Florida	Lot 56-61	11003
FIELD GOALS-ATT			512-1194	446-1189	11/26/14	vs Coastal Carolina	L 48-61	2426
Field goal pct			.429	.375	11/27/14	vs Robert Morris	L 54-71	2136
3 POINT FG-ATT			101-360	114-400	12/6/14	LOUISIANA COLLEGE	W 83-55	1053
3-point FG pct			.281	.285	12/09/14	NORTHWESTERN STATE	W 82-74	1082
3-pt FG made per game			4.8	5.4	12/13/14	at New Mexico	L 46-54	13710
FREE THROWS-ATT			233-336	254-351	12/16/14	CENTRAL BAPTIST	W 78-53	1060
Free throw pct			.693	.724	12/19/14	LSUA	W 76-71	1201
F-Throws made per game			11.1	12.1	12/21/14	at Samford	L 50-64	1053
REBOUNDS			780	734	* 12/30/14	at Georgia State	L 45-65	1371
Rebounds per game			37.1	35.0	* 01/05/15	ARKANSAS STATE	W 70-61	1418
Rebounding margin			+2.2	-	* 1/8/15	at UTA	Wot 76-73	1074
ASSISTS			283	239	* 1/10/15	at Texas State	W 62-59	1612
Assists per game			13.5	11.4	* 01/15/15	TROY	W 63-54	1676
TURNOVERS			248	250	* 01/17/15	UALR	W 64-52	1793
Turnovers per game			11.8	11.9	* 1/19/15	at UL-Lafayette	W 57-55	4213
Turnover margin			+0.1	-	* 01/22/15	UTA	L 57-61	1571
Assist/turnover ratio			1.1	1.0	* 01/24/15	GEORGIA SOUTHERN	L 53-57	2898
STEALS			113	123	* 01/29/15	at TROY	Wot 58-55	2289
Steals per game			5.4	5.9				
BLOCKS			100	70				
Blocks per game			4.8	3.3				
ATTENDANCE			14830	43290				
Home games-Avg/Game			10-1483	9-4303				
Neutral site-Avg/Game			-	2-2281				

Score by Periods	1st	2nd	OT	Totals
ULM	628	708	22	1358
Opponents	562	677	21	1260

#### On the Season in the SBC, ULM Ranks...

First in FG% defense: .375	Ongwae second in FT%: .863
First in 3FG% defense: .285	Deng second in blocks: 1.7 bpg
First in blocks: 4.8 bpg	Deng third in def rebs: 5.0 drpg
Third in scoring defense: 60.0 ppg	Williams third in FG%: .582
Third in assists: 13.5 apg	Coppola third in assists: 4.0 apg
Third in ast:turn ratio: 1.1	Coppola third in ast:turn ratio: 2.2
Third in def. rebs: 26.2 drpg	Ongwae fourth in off. rebs: 2.6 orpg
Third in reb. margin: +2.2	Ongwae fifth in rebounding: 6.9 rpg
	Coppola fifth in minutes: 34.7 mpg



# ULM Warhawks Men's Basketball

## University of Louisiana at Monroe



### 2014-15 ULM MEN'S BASKETBALL

#### ULM Combined Team Statistics (as of Jan 29, 2015)

#### Conference games

Conference Stats

RECORD:	OVERALL	HOME	AWAY	NEUTRAL
ALL GAMES	7-3	3-2	4-1	0-0
CONFERENCE	7-3	3-2	4-1	0-0
NON-CONFERENCE	0-0	0-0	0-0	0-0

#	Player	gp-gs	min	avg	Total		3-Point		F-Throw		Rebounds											
					fg-fga	fg%	3fg-fga	3fg%	ft-fa	ft%	off	def	tot	avg	pf	dq	a	to	blk	stl	pts	avg
00	Williams, Marvin	10-9	273	27.3	48-74	.649	0-0	.000	20-29	.690	22	39	61	6.1	22	1	6	23	8	4	116	11.6
13	Deng, Majok	10-9	298	29.8	37-75	.493	16-38	.421	18-26	.692	20	44	64	6.4	20	0	15	18	15	5	108	10.8
12	Ongwae, Tylor	10-10	340	34.0	37-107	.346	2-19	.105	31-35	.886	25	47	72	7.2	23	1	23	16	5	9	107	10.7
32	Roberson, Justin	10-1	238	23.8	26-80	.325	2-14	.143	21-30	.700	7	27	34	3.4	24	2	16	13	2	9	75	7.5
11	Coppola, Nick	10-10	357	35.7	24-75	.320	9-40	.225	7-13	.538	0	33	33	3.3	18	0	34	19	0	9	64	6.4
04	Foster, Mack	10-8	226	22.6	23-65	.354	9-37	.243	8-13	.615	3	21	24	2.4	16	1	11	9	1	5	63	6.3
05	Samuel, Jamaal	10-1	129	12.9	17-53	.321	7-28	.250	0-1	.000	4	20	24	2.4	10	0	3	6	5	1	41	4.1
22	Richard, Lance	4-0	15	3.8	2-7	.286	2-6	.333	0-0	.000	1	2	3	0.8	1	0	0	1	0	0	6	1.5
02	Harvey, DeMondre	10-1	96	9.6	5-10	.500	0-0	.000	5-10	.500	6	10	16	1.6	10	0	5	3	1	2	15	1.5
03	Cooper, Prince	7-0	48	6.9	4-5	.800	0-0	.000	0-4	.000	1	5	6	0.9	4	0	4	4	0	1	8	1.1
20	Amajoyi, Chinedu	4-1	30	7.5	0-2	.000	0-2	.000	2-2	1.000	0	0	0	0.0	0	0	3	1	0	1	2	0.5
Team											13	12	25									
Total.....		10	2050		223-553	.403	47-184	.255	112-163	.687	102	260	362	36.2	148	5	120	113	37	46	605	60.5
Opponents.....		10	2052		208-543	.383	54-187	.289	122-170	.718	88	258	346	34.6	146	-	113	109	29	60	592	59.2

TEAM STATISTICS	ULM	OPP
SCORING	605	592
Points per game	60.5	59.2
Scoring margin	+1.3	-
FIELD GOALS-ATT	223-553	208-543
Field goal pct	.403	.383
3 POINT FG-ATT	47-184	54-187
3-point FG pct	.255	.289
3-pt FG made per game	4.7	5.4
FREE THROWS-ATT	112-163	122-170
Free throw pct	.687	.718
F-Throws made per game	11.2	12.2
REBOUNDS	362	346
Rebounds per game	36.2	34.6
Rebounding margin	+1.6	-
ASSISTS	120	113
Assists per game	12.0	11.3
TURNOVERS	113	109
Turnovers per game	11.3	10.9
Turnover margin	-0.4	-
Assist/turnover ratio	1.1	1.0
STEALS	46	60
Steals per game	4.6	6.0
BLOCKS	37	29
Blocks per game	3.7	2.9
ATTENDANCE	9356	10559
Home games-Avg/Game	5-1871	5-2112
Neutral site-Avg/Game	-	0-0

Date	Opponent	Score	Att.
* 12/30/14	at Georgia State	L 45-65	1371
* 01/05/15	ARKANSAS STATE	W 70-61	1418
* 1/8/15	at UTA	Wot 76-73	1074
* 1/10/15	at Texas State	W 62-59	1612
* 01/15/15	TROY	W 63-54	1676
* 01/17/15	UALR	W 64-52	1793
* 1/19/15	at UL-Lafayette	W 57-55	4213
* 01/22/15	UTA	L 57-61	1571
* 01/24/15	GEORGIA SOUTHERN	L 53-57	2898
* 01/29/15	at TROY	Wot 58-55	2289

#### In SBC Games Only, ULM Ranks...

First in def. reb%: .744	Williams first in FG%: .649
Second in scoring defense: 59.2 ppg	Ongwae second in FT%: .886
Second in FG% defense: .383	Ongwae third in rebounding: 7.2 rpg
Second in 3FG% defense: .289	Ongwae third in off. rebs: 2.5 orpg
Third in blocks: 3.7 bpg	Deng third in blocks: 1.5 bpg
	Coppola third in assists: 3.4 apg
	Coppola fourth in ast:turn ratio: 1.8

Score by Periods	1st	2nd	OT	Totals
ULM	268	320	17	605
Opponents	264	317	11	592



# ULM Warhawks Men's Basketball

## University of Louisiana at Monroe



### ULM - TEAM GAME HIGHS

POINTS	106	CHAMPION BAPTIST (11/17/14)
	83	LOUISIANA COLLEGE (12/6/14)
	82	NORTHWESTERN STATE (12/09/14)
	78	CENTRAL BAPTIST (12/16/14)
	76	at UTA (1/8/15)
	76	LSUA (12/19/14)
FIELD GOALS MADE	41	CHAMPION BAPTIST (11/17/14)
	35	LOUISIANA COLLEGE (12/6/14)
FIELD GOAL ATTEMPTS	70	at UTA (1/8/15)
	69	CHAMPION BAPTIST (11/17/14)
FIELD GOAL PERCENTAGE	.594 (41-69)	CHAMPION BAPTIST (11/17/14)
	.574 (31-54)	NORTHWESTERN STATE (12/09/14)
3 PT FIELD GOALS MADE	9	at UTA (1/8/15)
	9	at Florida (11/21/14)
	9	CHAMPION BAPTIST (11/17/14)
3 PT FG ATTEMPTS	31	at UTA (1/8/15)
	26	at TROY (01/29/15)
3 PT FG PERCENTAGE	.600 (6-10)	at Samford (12/21/14)
	.375 (9-24)	CHAMPION BAPTIST (11/17/14)
	.375 (6-16)	at UAB (11/15/14)
	.375 (3-8)	NORTHWESTERN STATE (12/09/14)
FREE THROWS MADE	19	UALR (01/17/15)
	17	LSUA (12/19/14)
	17	NORTHWESTERN STATE (12/09/14)
FREE THROW ATTEMPTS	30	UALR (01/17/15)
	24	CHAMPION BAPTIST (11/17/14)
FREE THROW PERCENTAGE	.909 (10-11)	at Texas State (1/10/15)
	.889 (8-9)	TROY (01/15/15)
REBOUNDS	48	CHAMPION BAPTIST (11/17/14)
	47	at UTA (1/8/15)
	47	NORTHWESTERN STATE (12/09/14)
ASSISTS	21	LOUISIANA COLLEGE (12/6/14)
	21	CHAMPION BAPTIST (11/17/14)
STEALS	14	CHAMPION BAPTIST (11/17/14)
	12	LOUISIANA COLLEGE (12/6/14)
BLOCKED SHOTS	10	CHAMPION BAPTIST (11/17/14)
	8	NORTHWESTERN STATE (12/09/14)
TURNOVERS	20	LOUISIANA COLLEGE (12/6/14)
	18	at Texas State (1/10/15)
FOULS	24	at UTA (1/8/15)
	24	at Florida (11/21/14)

### ULM Career Double-Doubles

#### Tylor Ongwae (6)

27 pts, 11 rebs vs. UL-L (1/4/14)  
 27 pts, 10 rebs vs. Ga. State (1/25/14)  
 16 pts, 11 rebs at UL-L (2/1/14)  
 19 pts, 10 rebs vs. NSU (12/9/14)\*  
 15 pts, 10 rebs vs. Troy (1/15/15)\*  
 17 pts, 10 rebs vs. Ga. So. (1/14/15)\*

#### Majok Deng (4)

14 pts, 10 rebs vs. C. Car (11/26/14)\*  
 14 pts, 11 rebs vs. La. Col (12/6/14)\*  
 11 pts, 11 rebs vs. Cen Bap (12/16/14)\*  
 14 pts, 15 rebs vs. UALR (1/17/15)\*

#### Marvin Williams (3)

13 pts, 11 rebs at NSU (11/21/13)  
 11 pts, 13 rebs at ASU (3/6/14)  
 22 pts, 13 rebs at UTA (1/8/15)\*

#### Nick Coppola (1)

12 pts, 12 asts vs. La. Col (12/6/14)\*

#### DeMondre Harvey (1)

12 pts, 10 rebs, vs. NSU (12/9/14)\*

\* indicates this season





# ULM Warhawks Men's Basketball

## University of Louisiana at Monroe



### SUN BELT CONFERENCE STANDINGS

As of 1/31/15

School	SBC	Pct.	Overall	Pct.	Streak
1. Georgia Southern	7-2	.778	14-4	.778	W3
T-2. Georgia State	7-3	.700	14-7	.667	W3
<b>T-2. ULM</b>	<b>7-3</b>	<b>.700</b>	<b>13-8</b>	<b>.619</b>	<b>W1</b>
4. UT Arlington	6-4	.600	12-8	.600	L1
T-5. UL-Lafayette	5-5	.500	11-10	.524	L2
T-5. Appalachian State	5-5	.500	8-11	.421	L1
T-5. South Alabama	5-5	.500	7-14	.333	W1
8. Texas State	4-6	.400	10-9	.526	L4
9. Arkansas State	4-7	.364	9-11	.450	L1
10. UALR	3-7	.300	8-12	.400	W1
11. Troy	2-8	.200	7-12	.368	L4

#### Thursday's Results

Georgia Southern 83, App State 46  
 South Alabama 89, UL-Lafayette 85  
 Georgia State 88, UT Arlington 74  
 ULM 58, Troy 55 (OT)  
 UALR 75, Arkansas State 65

#### Saturday's Games

Arkansas St. at Georgia St., 1:00 PM  
 South Alabama at ULM, 4:00 PM  
 UL-Lafayette at Texas State, 4:30 PM  
 UALR at Georgia Southern, 6:30 PM  
 Troy at UT Arlington, 7:15 PM

Name	Career 10+ Points	Career 10+ Rebs	Career 10+ Asts
Tylor Ongwae	37 times (20+ 12 times)	6 times	
Nick Coppola	18 times		1 time
Marvin Williams	17 times (20+ 2 times)	3 times	
Jamaal Samuel	4 times		
Chinedu Amajoyi	3 times		
DeMondre Harvey	2 times	1 time	
Name	Season 10+ Points	Season 10+ Rebs	Season 10+ Asts
Tylor Ongwae	13 times (20+ 3 times)	3 times	
Majok Deng	12 times	4 times	
Nick Coppola	9 times		1 time
Justin Roberson	8 times		
Marvin Williams	7 times (20+ 2 times)	1 time	
Jamaal Samuel	3 times		
Mack Foster	3 times		
DeMondre Harvey	1 time	1 time	

#### Single-Game Categorical Highs 2014-15

Points	Tylor Ongwae - 25, two times, vs. CEBC/LSUA
Field Goals Made	Tylor Ongwae - 10, vs. Central Baptist
3FG Made	3, 10 times
Free Throws Made	Tylor Ongwae - 9, two times, at TXST/vs. GS
Rebounds	Majok Deng - 15, vs. UALR
Assists	Nick Coppola - 12, vs. Louisiana College
Steals	Mack Foster/Justin Roberson - 4, vs LC/at TXST
Blocks	Majok Deng/Jamaal Samuel - 4, at UAB/vs. C. Car.
Minutes	Nick Coppola - 45, at No. 8 Florida

#### Number of times in 2014-15 a ULM student-athlete has led the team in...

Player	Points	Rebs	Assists	FGM	FGA	FTM	FTA	3FGM	3FGA	Blocks	Steals	Mins
Tylor Ongwae	8	10	6	10	15	9	8	2	1	3	6	8
Marvin Williams	5	5		5	3	5	7			7	3	
Majok Deng	3	8	3	3	3	3	4	9	5	13	4	1
Nick Coppola	3		12	3	1	1	1	10	11		7	11
Jamaal Samuel	2	2		1	2			4	5	3	4	
Justin Roberson	1	2	5	2	1	4	5			1	8	2
Mack Foster	1		2	1			1	5	2	2	4	1
DeMondre Harvey		2	1							1	3	
Lance Richard								1	2			
Chinedu Amajoyi			1									
Prince Cooper												1

Note: If multiple student-athletes tie in a category in a single game, they all receive credit for leading the team





# ULM Warhawks Men's Basketball

## University of Louisiana at Monroe



### The Last Time ULM...

Scored 100 or more points  
 Scored 90 or more points  
 Scored 80 or more points  
 Scored fewer than 40 points  
 Held an opponent to under 50 points  
 Held an opponent to under 40 points  
 Won by 30 or more points  
 Won by 40 or more points  
 Won by 50 or more points  
 Won by 60 or more points  
 Had four double-digit scorers  
 Had five double-digit scorers  
 Had no double-digit scorers  
 Had 20 or more assists  
 Had fewer than 10 assists  
 Had 10 or more blocks  
 Had 10 or more steals  
 Had 25 or more turnovers  
 Had fewer than 10 turnovers  
 Made 30 or more field goals  
 Made 40 or more field goals  
 Made 50 or more field goals  
 Shot over 60 pct from field  
 Shot less than 20 pct from field  
 Made 10 or more 3-pointers  
 Made 15 or more 3-pointers  
 Shot over 50 pct from 3FG  
 Shot over 60 pct from 3FG  
 Shot less than 20 pct from 3FG  
 Made 20 or more free throws  
 Made 30 or more free throws  
 Shot 80-90 pct free throws  
 Shot over 90 pct free throws  
 Won on a buzzer beater  
 Lost on a buzzer beater  
 Won on the last possession  
 Lost on the last possession  
 Won in overtime  
 Won in double overtime  
 Won in triple overtime  
 Had two double-doubles in one game  
 Had two 20+ scorers in one game

106, vs. Champion Baptist (11/17/14)  
 106, vs. Champion Baptist (11/17/14)  
 82, vs. Northwestern State (12/9/14)  
 36, vs. Texas State (1/11/2014)  
 39, vs. Champion Baptist (11/17/14)  
 39, vs. Champion Baptist (11/17/14)  
 67, vs. Champion Baptist (11/17/14)  
 67, vs. Champion Baptist (11/17/14)  
 67, vs. Champion Baptist (11/17/14)  
 67, vs. Champion Baptist (11/17/14)  
 4, vs. Arkansas State (1/5/15)  
 5, vs. UALR (1/17/15)  
 at Georgia State (12/30/14)  
 20, vs. Northwestern State (12/9/14)  
 9, vs. Georgia Southern (1/24/15)  
 10, vs. Champion Baptist (11/17/14)  
 12, vs. Louisiana College (12/6/14)  
 29, at Northwestern State (11/21/13)  
 6, at Troy (1/29/15)  
 30, vs. Central Baptist (12/16/14)  
 41, vs. Champion Baptist (11/17/14)  
 51, vs. Georgia Southern (2/8/79)  
 .620 (31-50), at Nicholls State (11/28/11)  
 .185 (10-54) at No. 3 Ohio State (12/27/13)  
 10, at UT Arlington (1/9/14)  
 15, vs. Middle Tennessee (1/24/08)  
 .600 (6-10), at Samford (12/21/14)  
 .643 (9-14), at Troy (1/16/14)  
 .105 (2-19), vs. Georgia Southern (1/24/15)  
 24, vs. UL-Lafayette (1/4/14)  
 30, vs. Troy (12/31/09)  
 .833 (10-12), at Troy (1/29/15)  
 .909 (10-11), at Texas State (1/10/15)  
 W, 60-58, vs. SFA (Malcolm Thomas Jumper) (11/25/08)  
 L, 76-73, at La. Tech (Kyle Gibson 3FG) (12/2/09)  
 W, 66-65, at UALR (Pair of defensive stands) (3/10/14)  
 L, 65-64, vs. SFA (Zac Downing 3FG, 4 secs) (11/23/10)  
 W, 58-55 (OT), at Troy (1/29/15)  
 W, 103-98 (2OT), vs. UL-Lafayette (1/4/2014)  
 W, 107-106 (3OT), at La. Tech (1/5/1970)  
 Tylor Ongwae & DeMondre Harvey, vs. Northwestern State (12/9/14)  
 Tylor Ongwae (25) & Amos Olatayo (20), at UT Arlington (1/9/2014)

### A ULM Player...

Had a double-double (pts-rbs)  
 Had a double-double (pts-asts)  
 Had a triple-double  
 Had 20 points or more  
 Had 30 points or more  
 Had 40 points or more  
 Had 50 points or more  
 Made 10 or more field goals  
 Made 15 or more field goals  
 Made five or more 3FG  
 Made 10 or more FT  
 Had 10 or more rebounds  
 Had 15 or more rebounds  
 Had 20 or more rebounds  
 Had 25 or more rebounds  
 Had 30 or more rebounds  
 Had 10 or more assists  
 Had 15 or more assists  
 Had five or more steals  
 Had 10 or more steals  
 Had five or more blocks  
 Had 10 or more blocks  
 Played 40 minutes or more

Tylor Ongwae (17 pts, 10 rebs), vs. Georgia Southern (1/24/15)  
 Nick Coppola (12 pts, 12 asts), vs. Louisiana College (12/6/14)  
 Wojciech Mydra (11 pts, 10 rebs, 10 blks) vs. SHSU (1/24/02)  
 Marvin Williams (22), vs. UT Arlington (1/8/15)  
 Amos Olatayo (30), at Northwestern State (11/21/13)  
 Henry Steele (40), vs. Louisiana College (1/23/71)  
 Glynn Saulters (51), vs. Nicholls State (1/1/68)  
 Tylor Ongwae (10), vs. Central Baptist (12/16/14)  
 Mike Smith (15), vs. Houston (12/15/99)  
 Trent Mackey (5), vs. North Texas (2/14/13)  
 Chinedu Amajoyi (10-12), vs. Arkansas State (1/30/2014)  
 Tylor Ongwae, (10), vs. Georgia Southern (1/24/15)  
 Majok Deng (15), vs. UALR (1/17/15)  
 DeAndre Alexander (20), vs. Lamar (3/2/05)  
 Calvin Natt (25), vs. Miss. State (12/5/78)  
 Calvin Natt (31) vs. Georgia Southern (12/29/76)  
 Nick Coppola (12), vs. Louisiana College (12/6/14)  
 Jayon James (15), at FIU (2/2/13)  
 Tylor Ongwae (5), vs. UALR (2/15/14)  
 Arthur Hayes (10), vs. McNeese State (1983)  
 Jayon James (5), vs. UALR (2/15/14)  
 Wojciech Mydra (13), vs. UTSA (3/2/02)  
 Majok Deng & Mack Foster (40 each), at Troy (1/29/15)

### MISCELLANEOUS STATS 2014-15

#### Largest halftime lead

35 (53-18), vs. Champion Baptist (11/17/14)

#### Largest halftime deficit

11 (37-26), vs. Robert Morris (11/27/14)

#### Largest halftime lead surrendered in a loss

3 (26-23), at Georgia State (12/30/14)

#### Largest halftime deficit overcome in a win

10 (31-21), at Troy (1/29/15)

#### Largest lead any time

67 (106-39), vs. Champion Baptist (11/17/14)

#### Largest deficit any time

20, (65-45) at Georgia State (12/30/14)

#### Largest lead surrendered in a loss

12, at No. 8 Florida (11/21/14)

#### Largest deficit overcome in a win

13, two times (at UTA/at Troy)

#### Most points scored in a half

53, vs. Champion Baptist (11/17/14)

#### Fewest points scored in a half

19, two times

#### Most points allowed in a half

44, two times (vs. NSU/LSUA)

#### Fewest points allowed in a half

18, first half vs. Champion Baptist (11/17/14)

#### Largest Rebounding Advantage

+27 (48-21), vs. Champion Baptist (11/17/14)

#### Largest Rebounding Disadvantage

-13 (49-36), at No. 8 Florida (11/21/14)

#### Highest Plus Turnover Differential

+13 (24-11), vs. Champion Baptist (11/17/14)

#### Highest Minus Turnover Differential

-11 (15-4), vs. NSU (12/9/14)

#### Most 3FG Made In a Game

9, three times

#### Most 3FG Allowed in a Game

10, vs. NSU (12/9/14)



# ULM Warhawks Men's Basketball

## University of Louisiana at Monroe



### 0 Marvin Williams

Senior | Center | 6-8 | 245  
Memphis, Tenn. | NW Florida State College

	Season-High	Career-High
Pts	22, two times	22, two times
FG	9, two times	9, two times
3FG	1, at Florida (11/22/14)	1, two times
FT	6, at UTA (1/8/15)	6, at UTA (1/8/15)
Ast	2, vs. GaSo (1/24/15)	2, four times
Reb	13, at UTA (1/8/15)	13, two times
Blocks	3, two times	4, vs. UALR (2/15/14)
Steals	2, vs. CHBC (11/17/14)	2, vs. CHBC (11/17/14)
Min	36, vs. RMU (11/27/14)	36, vs. RMU (11/27/14)



### 2 DeMondre Harvey

Junior | Forward | 6-7 | 210  
Memphis, Tenn. | NW Florida State College

	Season-High	Career-High
Pts	12, vs. NSU (12/9/14)	12, vs. NSU (12/9/14)
FG	6, vs. NSU (12/9/14)	6, vs. NSU (12/9/14)
3FG	N/A	N/A
FT	5, vs. LSU (12/19/14)	5, vs. LSU (12/19/14)
Ast	3, vs. ASU (1/5/15)	3, vs. ASU (1/5/15)
Reb	10, vs. NSU (12/9/14)	10, vs. NSU (12/9/14)
Blocks	3, vs. CHBC (11/17/14)	3, vs. CHBC (11/17/14)
Steals	1, four times	3, vs. ASU (3/1/14)
Min	30, two times	30, two times

Opp	GS	Min	FG-FGA/Pct.	3FG-FGA	FT-FTA/PCT	O-D-T	PF-FO	A	TO	Bk	Stl	Pts/Avg
UAB	*	16	1-5/.200	0-1/.000	1-1/1.000	0-0-0	3-0	0	0	0	1	3/3.0
CH BAP	*	18	3-3/1.000	0-0/.000	5-8/.625	1-3-4	2-0	1	1	0	2	11/7.0
Florida	*	27	3-11/.273	1-1/1.000	0-0/.000	3-1-4	2-0	0	1	2	0	7/7.0
C. Car	*	6	0-1/.000	0-1/.000	0-0/.000	0-2-2	4-0	0	2	0	0	0/5.3
RMU	*	36	6-11/.545	0-0/.000	2-5/.400	2-3-5	3-0	1	1	3	1	14/7.0
La. Col		10	1-1/1.000	0-0/.000	0-0/.000	0-3-3	1-0	0	1	0	0	2/6.2
NSU		9	1-1/1.000	0-0/.000	0-0/.000	0-2-2	2-0	0	2	1	0	2/5.6
N.M.	*	18	2-4/.500	0-0/.000	2-2/1.000	3-2-5	2-0	0	2	2	0	6/5.6
CE BAP					DNP							
LSU-A		22	4-7/.571	0-0/.000	2-6/.333	2-2-4	1-0	0	0	2	0	10/6.1
Samford		16	2-4/.500	0-0/.000	0-0/.000	2-2-4	4-0	1	1	0	0	4/5.9
Ga. St.		17	1-3/.333	0-0/.000	5-6/.833	2-4-6	2-0	1	3	0	0	7/6.0
Ark. St.	*	33	9-12/.750	0-0/.000	4-5/.800	3-4-7	1-0	1	2	0	0	22/7.3
UTA	*	32	8-12/.667	0-0/.000	6-6/1.000	6-7-13	2-0	0	2	2	0	22/8.5
TXST	*	31	9-9/1.000	0-0/.000	0-0/.000	3-3-6	2-0	1	5	0	0	18/9.1
Troy	*	24	4-7/.571	0-0/.000	0-0/.000	1-5-6	3-0	0	3	3	0	8/9.1
UALR	*	23	5-8/.625	0-0/.000	0-2/.000	1-3-4	5-1	0	2	1	0	10/9.1
UL-L	*	31	3-8/.375	0-0/.000	0-3/.000	3-4-7	4-0	0	2	1	2	6/8.9
UTA	*	28	6-6/1.000	0-0/.000	5-6/.833	2-6-8	0-0	0	0	1	1	17/9.4
Ga. So.	*	35	1-4/.250	0-0/.000	0-1/.000	1-0-1	2-0	2	3	0	1	2/9.0
Troy	*	19	2-5/.400	0-0/.000	0-0/.000	0-3-3	1-0	1	1	0	0	4/8.8
USA												
UALR												
Ga. So.												
UL-L												
App. St.												
Ark. St.												
USA												
App. St.												
Ga. St.												
TXST												
TBA												
<b>Totals</b>	<b>15</b>	<b>451</b>	<b>71-122/.582</b>	<b>1-3/.333</b>	<b>32-51/.627</b>	<b>35-59-94</b>	<b>46-1</b>	<b>9</b>	<b>34</b>	<b>18</b>	<b>8</b>	<b>175/8.8</b>

Opp	GS	Min	FG-FGA/Pct.	3FG-FGA	FT-FTA/PCT	O-D-T	PF-FO	A	TO	Bk	Stl	Pts/Avg
UAB		22	2-7/.286	0-0/.000	1-2/.500	3-2-5	0-0	0	1	0	0	5/5.0
CH BAP		21	2-3/.667	0-0/.000	2-3/.667	6-3-9	1-0	0	1	3	0	9/7.0
Florida		6	0-0/.000	0-0/.000	0-0/.000	0-0-0	1-0	0	0	0	0	0/4.7
C. Car		15	0-1/.000	0-0/.000	0-0/.000	1-0-1	1-0	0	0	0	0	0/3.5
RMU		1	0-0/.000	0-0/.000	0-0/.000	0-0-0	0-0	0	0	0	0	0/2.2
La. Col	*	30	4-7/.571	0-0/.000	0-0/.000	2-7-9	1-0	2	3	1	1	8/3.2
NSU	*	30	6-6/1.000	0-0/.000	0-0/.000	1-9-10	1-0	1	2	2	0	12/4.4
N.M.		10	0-0/.000	0-0/.000	0-0/.000	1-0-1	3-0	1	1	1	0	0/3.9
CE BAP		25	4-7/.571	0-0/.000	0-0/.000	4-4-8	3-0	0	0	0	0	8/4.3
LSU-A	*	16	1-1/1.000	0-0/.000	5-5/1.000	0-2-2	0-0	0	1	0	1	7/4.6
Samford	*	14	3-4/.750	0-0/.000	0-3/.000	2-1-3	1-0	0	0	0	0	6/4.7
Ga. St.	*	20	1-4/.250	0-0/.000	1-2/.500	2-2-4	1-0	0	0	0	0	3/4.6
Ark. St.		13	2-2/1.000	0-0/.000	0-1/.000	1-3-4	2-0	3	1	0	0	4/4.5
UTA		7	1-2/.500	0-0/.000	0-0/.000	0-1-1	1-0	0	1	0	1	2/4.4
TXST		9	0-1/.000	0-0/.000	0-0/.000	1-0-1	2-0	1	0	1	0	0/4.1
Troy		16	1-1/1.000	0-0/.000	0-0/.000	0-1-1	0-0	1	0	0	1	2/3.9
UALR		14	0-0/.000	0-0/.000	0-2/.000	0-0-0	2-0	0	0	0	0	0/3.7
UL-L		3	0-0/.000	0-0/.000	0-0/.000	0-0-0	1-0	0	0	0	0	0/3.5
UTA		5	0-0/.000	0-0/.000	4-5/.800	1-0-1	0-0	0	0	0	0	4/3.5
Ga. So.		4	0-0/.000	0-0/.000	0-0/.000	0-0-0	1-0	0	1	0	0	0/3.4
Troy		5	0-0/.000	0-0/.000	0-0/.000	1-3-4	0-0	0	0	0	0	0/3.2
USA												
UALR												
Ga. So.												
UL-L												
App. St.												
Ark. St.												
USA												
App. St.												
Ga. St.												
TXST												
TBA												
<b>Totals</b>	<b>5</b>	<b>286</b>	<b>27-46/.587</b>	<b>0-0/.000</b>	<b>13-23/.565</b>	<b>26-38-64</b>	<b>22-0</b>	<b>9</b>	<b>12</b>	<b>8</b>	<b>4</b>	<b>67/3.2</b>

#### 2014-15 (SENIOR)

Posted game-highs of 17 points and eight rebounds vs. UTA... won SBC and Co-LSWA Player of the Week on Jan. 12 after leading the team to a 3-0 record and going 26-33 (.798) FG with 20.7 ppg and 8.7 rpg... came up huge with 18 points on 9-9 shooting at Texas State... matched career-highs of 22 points and 13 rebounds in a big 76-73 overtime win over UTA and had eight of ULM's nine points in overtime and was a perfect 6-6 from the free throw line... dominating career-high performance of 22 points and nine made field goals in the win over Arkansas State and also grabbed seven rebounds... put in 10 points in a win over UALR at home... registered 14 points, six field goals made and 36 minutes in the Battle 4 Atlantis against Robert Morris... grabbed a season-high six rebounds at Georgia State... tallied 11 points on a perfect 3-for-3 from the field, grabbed four rebounds and set a career-high two steals in a win over Champion Baptist... scored 10 points with four rebounds and a pair of blocks in a victory over LSU-A

#### 2013-14 (JUNIOR)

Tallied a pair of double-doubles with 13 points and 10 rebounds at Northwestern State and 11 points and 13 rebounds at Arkansas State... led the team with 23 blocks, finishing top-10 in the SBC... averaged 8.5 points and 4.8 rebounds per game... shot 48.6 percent from the field (89-183) which was top-15 in the league... grabbed 2.1 offensive rebounds per game in conference play, eighth-best in the league... posted nine double-figure scoring games on the season including a career-high 19 points at No. 5 Kansas to outscore Preseason Player of the Year Andrew Wiggins... the 13 rebounds against the Red Wolves were the most by a Warhawk in a single-game on the season... turned in 14 points and nine rebounds against UT Arlington at the SBC Championships... rejected a career-high four blocks at home against UALR

#### 2014-15 (JUNIOR)

Posted a career performance against Northwestern State with a double-double and personal bests of 12 points and 10 rebounds in the win; matched his career-high with 30 minutes after getting the start... also earned the start and logged 30 minutes against Louisiana College; recorded eight points and nine rebounds in the contest... big outing with nine points, nine rebounds and three blocks in the win over Champion Baptist

#### 2013-14 (SOPHOMORE)

Led the team in field goal percentage with a .531 mark (34-64)... registered a career-high 11 points on four made field goals against Thomas... grabbed a career-high eight rebounds at both Ole Miss and UALR... played a career-high 25 minutes at home against WKU... career-high three steals at home against Troy... recorded 13 blocks and 13 steals on the season... made four starts and played in all 27 contests... averaged 3.1 points and 3.4 rebounds per game... led the team in rebounding in four games and in blocks in six games

#### PREVIOUS SCHOOL

Played at Pearl River Junior College in Poplarville, Miss. and averaged 6.4 points and 5.8 rebounds per game ... Played in all 25 games and made 15 starts ... Registered three double-doubles including 14 points and 11 rebounds in the final game of the season on March 8 ... Tallied a career-high 15 points and four blocks against Holmes Community College on Nov. 5 ... Shot 60.0 percent from the field on the season and 60.6 percent from the free throw line ... Will have three years of eligibility remaining at ULM





# ULM Warhawks Men's Basketball

## University of Louisiana at Monroe



### 3 Prince Cooper

Sophomore | Guard | 6-4 | 215  
Freeport, Bahamas | Miami-Dade College

	Season-High	Career-High
Pts	3, vs. CHBC (11/17/14)	3, vs. CHBC (11/17/14)
FG	1, seven times	1, seven times
3FG	N/A	N/A
FT	1, vs. CHBC (11/17/14)	1, vs. CHBC (11/17/14)
Ast	3, vs. CHBC (11/17/14)	3, vs. CHBC (11/17/14)
Reb	5, vs. CHBC (11/17/14)	5, vs. CHBC (11/17/14)
Blocks	1, vs. CHBC (11/17/14)	1, vs. CHBC (11/17/14)
Steals	1, two times	1, two times
Min	24, vs. CHBC (11/17/14)	24, vs. CHBC (11/17/14)

Opp	GS	Min	FG-FGA/Pct.	3FG-FGA	FT-FTA/PCT	O-D-T	PF-FO	A	TO	Blk	Stl	Pts/Avg
UAB	5	0-1/.000	0-0/.000	0-0/.000	1-0-1	0-0	0	0	0	0	0	0/0.0
CH BAP	24	1-6/.167	0-0/.000	1-2/.500	2-3-5	1-0	3	2	1	1		3/1.5
Florida	6	1-2/.500	0-0/.000	0-0/.000	1-3-4	0-0	0	0	0	0		2/1.7
C. Car	12	1-1/1.000	0-0/.000	0-0/.000	0-2-2	0-0	1	1	0	0		2/1.8
RMU	8	0-0/.000	0-0/.000	0-0/.000	1-0-1	0-0	0	0	0	0		0/1.4
La. Col				DNP								
NSU				DNP								
N.M.	1	0-0/.000	0-0/.000	0-0/.000	0-0-0	0-0	0	0	0	0		0/1.2
CE BAP	7	0-1/.000	0-0/.000	0-2/.000	0-0-0	0-0	1	1	0	0		0/1.0
LSU-A				DNP								
Samford				DNP								
Ga. St.	18	1-2/.500	0-0/.000	0-2/.000	0-1-1	0-0	2	2	0	1		2/1.1
Ark. St.	4	1-1/1.000	0-0/.000	0-0/.000	1-0-1	0-0	0	0	0	0		2/1.2
UTA	8	1-1/1.000	0-0/.000	0-0/.000	0-1-1	2-0	0	0	0	0		2/1.3
TXST	5	1-1/1.000	0-0/.000	0-0/.000	0-2-2	0-0	1	0	0	0		2/1.4
Troy	5	0-0/.000	0-0/.000	0-0/.000	0-0-0	0-0	1	0	0	0		0/1.3
UALR				DNP								
UL-L	6	0-0/.000	0-0/.000	0-0/.000	0-0-0	0-0	0	0	0	0		0/1.2
UTA	2	0-0/.000	0-0/.000	0-2/.000	0-1-1	2-0	0	2	0	0		0/1.1
Ga. So.				DNP								
Troy				DNP								
USA												
UALR												
Ga. So.												
UL-L												
App. St.												
Ark. St.												
USA												
App. St.												
Ga. St.												
TXST												
TBA												
Totals	111	7-16/.438	0-0/.000	1-8/.125	6-13-.19	5-0	9	8	1	2		15/1.1

#### 2014-15 (SOPHOMORE)

Set nearly every career high in a win against Champion Baptist including five rebounds and three assists in 24 minutes... hit a mid-range jumpers in conference against Georgia State, Arkansas State, UT Arlington and Texas State

#### PREVIOUS SCHOOL

Played one season at Miami-Dade JC (Fla.)... averaged 10.4 points, 6.4 rebounds and 2.1 assists per game... shot an astounding 83 percent from the field... earned Dean's List honors for his achievements in the classroom

#### HIGH SCHOOL

Lettered in both basketball and track & field at Piney Woods HS (Miss.)... averaged 12 points, eight rebounds and three assists per game... named team captain as a senior... state champion in the triple jump (track & field)... earned academic honor roll and the highest chemistry and algebra II award... graduated top-15 in his class



### 4 Mack Foster

Junior | Guard | 6-2 | 185  
Beulah, Miss. | East Mississippi CC

	Season-High	Career-High
Pts	15, at Troy (1/29/15)	15, at Troy (1/29/15)
FG	5, two times	5, two times
3FG	3, three times	3, three times
FT	2, three times	2, three times
Ast	3, two times	3, two times
Reb	4, two times	4, two times
Blocks	1, four times	1, four times
Steals	4, vs. LC (12/6/14)	4, vs. LC (12/6/14)
Min	33, at Troy (1/29/15)	33, at Troy (1/29/15)

Opp	GS	Min	FG-FGA/Pct.	3FG-FGA	FT-FTA/PCT	O-D-T	PF-FO	A	TO	Blk	Stl	Pts/Avg
UAB	7	0-2/0.00	0-2/0.00	0-0/0.00	0-0-0	1-0	0	0	1	0	0	0/0.0
CH BAP	24	5-9/.556	3-6/.500	0-0/0.00	1-1-2	2-0	3	1	1	3	13	13/7.5
Florida	18	1-4/.250	1-2/.500	0-0/0.00	0-0-0	4-0	2	0	0	3	3	3/5.3
C. Car	11	3-4/.750	0-1/0.00	0-2/0.00	2-0-2	0-0	1	0	0	0	6	6/5.5
RMU	14	3-4/.750	0-1/0.00	0-2/0.00	1-0-1	1-0	3	0	0	0	6	6/5.6
La. Col	18	3-5/.600	0-0/0.00	2-2/1.000	0-1-1	2-0	2	0	0	4	8	8/6.0
NSU	14	1-6/.167	0-1/0.00	0-0/0.00	0-0-0	1-0	1	1	0	0	2	2/5.4
N.M.	18	2-4/.500	1-2/.500	0-0/0.00	2-1-3	0-0	1	1	0	0	5	5/5.4
CE BAP	11	0-3/0.00	0-1/0.00	0-0/0.00	0-3-3	2-0	0	1	0	0	0	0/4.8
LSU-A	12	2-3/.667	1-1/1.000	0-0/0.00	0-0-0	2-0	1	1	0	0	5	5/4.8
Samford	13	0-2/0.00	0-1/0.00	0-0/0.00	0-1-1	2-0	1	0	1	0	0	0/4.5
Ga. St.	14	2-5/.400	1-3/.333	2-2/1.000	0-1-1	0-0	1	0	0	0	7	7/4.6
Ark. St.	* 22	2-5/.400	0-2/0.00	0-0/0.00	0-2-2	1-0	0	1	0	1	4	4/4.5
UTA	* 28	4-9/.444	3-8/.375	0-1/0.00	0-4-4	5-1	2	1	0	0	11	11/5.0
TXST	* 29	1-7/.143	1-6/.167	0-0/0.00	0-1-1	2-0	1	1	0	0	3	3/4.9
Troy	* 21	2-7/.286	0-2/0.00	2-2/1.000	1-2-3	1-0	2	0	1	0	6	6/4.9
UALR	* 18	0-4/0.00	0-2/0.00	0-2/0.00	0-0-0	2-0	0	1	0	1	0	0/4.6
UL-L	* 14	2-9/.222	0-3/0.00	2-2/1.000	1-3-4	0-0	0	2	0	1	6	6/4.7
UTA	* 20	2-3/.667	1-2/.500	0-0/0.00	0-3-3	2-0	2	1	0	1	5	5/4.7
Ga. So.	* 27	3-6/.500	0-3/0.00	0-2/0.00	0-2-2	2-0	2	2	0	0	6	6/4.8
Troy	33	5-10/.500	3-6/.500	2-2/1.000	1-3-4	1-0	1	0	0	1	15	15/5.3
USA												
UALR												
Ga. So.												
UL-L												
App. St.												
Ark. St.												
USA												
App. St.												
Ga. St.												
TXST												
TBA												
<b>Totals</b>	<b>8</b>	<b>386</b>	<b>43-111/.387</b>	<b>15-55/.273</b>	<b>10-19/.526</b>	<b>9-28-37</b>	<b>33-1</b>	<b>26</b>	<b>14</b>	<b>4</b>	<b>15</b>	<b>111/5.3</b>

#### 2014-15 (JUNIOR)

Drained a career-high 15 points and played a career-high 33 minutes in an overtime win at Troy... earned eight consecutive starts including at UT Arlington where he netted 11 points after a trio of three-pointers... ULM went on a six-game winning streak with him starting... became the first Warhawk to register four steals in a game on the season in the win over Louisiana College... shot 3-for-4 from the field in both games of the Battle 4 Atlantis Mainland bracket against Coastal Carolina and Robert Morris... registered a career-high 13 points and hit a trio of three-pointers in 24 minutes in a win over Champion Baptist

#### PREVIOUS SCHOOL

Played two seasons at East Mississippi CC and led the team to the Region 23 championship... guided the team to a No. 11 ranking in the NJCAA National Poll... averaged 7.1 points, 4.0 rebounds and 1.0 steals per game... hit a career-high six three-pointers in a game

#### HIGH SCHOOL

Lettered in both basketball and track & field at West Bolivar HS... named Co-MVP All-State and Best Offensive Player... earned All-Area MVP, First-Team and Best Defensive Player... guided the Eagles to the state championship... averaged 15 points, six rebounds, three steals and two blocks per game... dunked on Johnny O'Bryant III, who was drafted by the Milwaukee Bucks, his freshman year off a put-back



# ULM Warhawks Men's Basketball

## University of Louisiana at Monroe



### 5 Jamaal Samuel

Junior | Forward | 6-9 | 205  
New Orleans, La. | Illinois State

	Season-High	Career-High
Pts	18, vs. CHBC (11/17/14)	18, vs. CHBC (11/17/14)
FG	7, vs. CHBC (11/17/14)	7, vs. CHBC (11/17/14)
3FG	3, two times	3, two times
FT	4, vs. NSU (12/9/14)	4, vs. NSU (12/9/14)
Ast	2, two times	2, three times
Reb	7, vs. NSU (12/9/14)	8, vs. Bradley (2/15/14)
Blocks	4, vs. C. Carolina (11/26/14)	4, two times
Steals	2, two times	2, two times
Min	27, at UNM (12/13/14)	27, at UNM (12/13/14)

Opp	GS	Min	FG-FGA/Pct.	3FG-FGA	FT-FTA/PCT	O-D-T	PF-FO	A	TO	Blk	Stl	Pts/Avg
UAB		17	1-4/.250	1-3/.333	0-0/.000	0-2-2	3-0	2	2	0	1	3/3.0
CH BAP		20	7-12/.583	3-6/.500	1-2/.500	1-5-6	1-0	0	2	2	0	18/10.5
Florida		22	3-10/.300	3-10/.300	0-0/.000	1-5-6	3-0	0	1	0	1	9/10.0
C. Car		23	1-4/.250	1-4/.250	0-0/.000	0-2-2	2-0	1	1	4	1	3/8.3
RMU		14	1-5/.200	1-4/.250	1-2/.500	0-5-5	2-0	1	4	0	1	4/7.4
La. Col		11	1-6/.167	0-1/.000	0-0/.000	2-0-2	2-0	0	0	1	0	2/6.5
NSU		14	4-8/.500	0-0/.000	4-5/.800	3-4-7	3-0	0	0	3	0	12/7.3
N.M.		27	2-7/.286	0-4/.000	2-2/1.000	0-2-2	0-0	0	0	0	2	6/7.1
CE BAP	*	21	1-5/.200	0-1/.000	1-2/.500	0-2-2	2-0	0	2	2	2	3/6.7
LSU-A		21	4-6/.667	0-2/.000	0-0/.000	2-3-5	1-0	1	2	1	0	8/6.8
Samford		25	5-8/.625	2-2/1.000	1-2/.500	0-6-6	4-0	0	1	1	0	13/7.4
Ga. St.	*	26	4-12/.333	1-4/.250	0-1/.000	0-5-5	0-0	2	1	0	0	9/7.5
Ark. St.		13	2-7/.286	1-4/.250	0-0/.000	0-0-0	0-0	0	0	1	0	5/7.3
UTA		12	1-8/.125	1-5/.200	0-0/.000	0-4-4	0-0	0	0	0	0	3/7.0
TXST		6	1-3/.333	0-2/.000	0-0/.000	0-1-1	2-0	0	1	0	0	2/6.7
Troy		12	2-4/.500	0-2/.000	0-0/.000	2-3-5	3-0	0	1	0	0	4/6.5
UALR		7	0-1/.000	0-1/.000	0-0/.000	0-2-2	1-0	0	1	0	0	0/6.1
UL-L		18	3-5/.600	3-4/.750	0-0/.000	0-0-0	2-0	0	1	0	1	9/6.3
UTA		13	0-3/.000	0-2/.000	0-0/.000	0-3-3	0-0	0	1	2	0	0/5.9
Ga. So.		9	3-7/.429	0-1/.000	0-0/.000	1-1-2	1-0	1	0	1	0	6/6.0
Troy		13	1-3/.333	1-3/.333	0-0/.000	1-1-2	1-0	0	0	1	0	3/5.8
USA												
UALR												
Ga. So.												
UL-L												
App. St.												
Ark. St.												
USA												
App. St.												
Ga. St.												
TXST												
TBA												
Totals	2	344	47-128/.367	18-65/.277	10-16/.625	13-56-69	33-0	8	21	19	9	122/5.8

#### 2014-15 (JUNIOR)

Hit a trio of long-range shots at UL-Lafayette... netted 13 points including a pair of three-pointers and pulled down six rebounds against Samford... registered 12 points and grabbed a season-high seven rebounds in the win over NSU... set career highs in points (18), field goals made (7) and three-pointers made (3) in a win over Champion Baptist... earned the start against Central Baptist and had a pair of blocks and steals... led the team with nine points at Georgia State

#### 2013-14 (SOPHOMORE) ILLINOIS STATE

Played in 26 games with one start... ranked second on the team and No. 5 in the Missouri Valley Conference with 0.9 blocks per game... netted four points with four rebounds and three blocks in the loss at Southern Illinois (March 1)... grabbed a career-best eight rebounds and scored four points in the win over Bradley (Feb. 15)... blocked a career-best four shots and collected six rebounds in the overtime loss at Evansville (Feb. 12)... netted nine points on 3-for-4 shooting in the loss at Loyola (Feb. 9)... scored a career-high 10 points on a career-best five field goals (5-for-5) in the win over Northern Iowa (Feb. 5)... made his first-career start and scored four points during a career-high 24 minutes in the win over Drake (Feb. 1)... registered the first two blocks of his career in the win over Chicago State (Dec. 4)... scored nine points on 4-for-6 shooting with five rebounds in the loss at No. 14 VCU (Nov. 8)

#### 2012-13 (FRESHMAN) PRIOR TO ILLINOIS STATE

Helped guide South Plains College to a 22-8 overall record and an 11-5 mark in the Western Junior College Athletic Conference (WJAC) as a freshman in 2012-13... shot 46.7 percent from the field



### 11 Nick Coppola

Sophomore | Guard | 5-11 | 195  
Richmond, Va. | Benedictine Prep

	Season-High	Career-High
Pts	15, two times	16, at GSU (2/20/14)
FG	6, three times	6, four times
3FG	3, three times	4, at GSU (2/20/14)
FT	4, at UNM (12/13/14)	5, at KU (11/8/13)
Ast	12, vs. LC (12/6/14)	12, vs. LC (12/6/14)
Reb	6, vs. GaSo (1/24/15)	6, two times
Blocks	N/A	N/A
Steals	3, vs. LC (12/6/14)	3, vs. LC (12/6/14)
Min	45, at Florida (11/21/14)	45, at Florida (11/21/14)

Opp	GS	Min	FG-FGA/Pct.	3FG-FGA	FT-FTA/PCT	O-D-T	PF-FO	A	TO	Blk	Stl	Pts/Avg
UAB	*	33	5-8/.625	3-5/.600	1-2/.500	0-4-4	0-0	6	2	0	1	14/14.0
CH BAP	*	12	2-2/1.000	1-1/1.000	2-4/.500	0-2-2	1-0	4	0	0	1	7/10.5
Florida	*	45	3-10/.300	3-5/.600	2-2/1.000	0-1-1	3-0	2	1	0	1	11/10.7
C. Car	*	37	2-9/.222	1-5/.200	0-0/.000	0-1-1	2-0	7	0	0	0	5/9.3
RMU	*	39	2-8/.250	2-6/.333	0-0/.000	1-2-3	2-0	2	2	0	1	6/8.6
La. Col	*	31	6-9/.667	0-2/.000	0-2/.000	0-0-0	1-0	12	4	0	3	12/9.2
NSU	*	40	4-9/.444	2-5/.400	3-4/.750	1-4-5	3-0	6	2	0	2	13/9.7
N.M.	*	29	2-8/.250	1-4/.250	4-4/1.000	0-2-2	5-1	0	1	0	0	9/9.6
CE BAP	*	28	4-5/.800	2-3/.667	2-2/1.000	0-1-1	3-0	2	2	0	2	12/9.9
LSU-A	*	40	5-11/.455	1-4/.250	2-3/.667	0-3-3	1-0	6	1	0	0	13/10.2
Samford	*	37	6-12/.500	3-4/.750	0-0/.000	1-1-2	2-0	2	3	0	0	15/10.6
Ga. St.	*	29	2-4/.500	2-3/.667	0-0/.000	0-4-4	1-0	4	1	0	2	6/10.3
Ark. St.	*	40	1-5/.200	0-1/.000	1-2/.500	0-4-4	2-0	6	1	0	0	3/9.7
UTA	*	42	2-9/.222	0-5/.000	2-5/.400	0-2-2	2-0	7	3	0	1	6/9.4
TXST	*	34	1-5/.200	1-3/.333	0-0/.000	0-4-4	2-0	4	5	0	0	3/9.0
Troy	*	33	1-5/.200	1-4/.250	0-0/.000	0-2-2	1-0	2	3	0	0	3/8.6
UALR	*	40	6-11/.545	1-4/.250	2-2/1.000	0-2-2	0-0	5	2	0	2	15/9.0
UL-L	*	35	3-9/.333	1-4/.250	0-0/.000	0-4-4	1-0	1	1	0	1	7/8.9
UTA	*	34	2-6/.333	1-4/.250	0-0/.000	0-2-2	3-0	3	3	0	2	5/8.7
Ga. So.	*	34	4-11/.364	1-5/.200	1-2/.500	0-6-6	4-0	1	0	0	0	10/8.8
Troy	*	36	2-10/.200	1-7/.143	1-2/.500	0-3-3	2-0	2	0	0	1	6/8.6
USA												
UALR												
Ga. So.												
UL-L												
App. St.												
Ark. St.												
USA												
App. St.												
Ga. St.												
TXST												
TBA												
<b>Totals</b>	<b>21</b>	<b>728</b>	<b>65-166/.392</b>	<b>28-84/.333</b>	<b>23-36/.639</b>	<b>3-54-57</b>	<b>41-1</b>	<b>83</b>	<b>37</b>	<b>0</b>	<b>20</b>	<b>181/8.6</b>

#### 2013-14 College Sports Madness SBC Freshman of the Year

#### 2014-15 (SOPHOMORE)

Has started at point guard in every game of his career... matched a season-high and led the team with 15 points against UALR at home... set his season-high with 15 points at Samford... recorded 13 points vs. LSU-A... tallied career-highs of 12 assists and three steals against Louisiana College and also had a double-double with 12 points... posted 12 points on four-for-five shooting against Central Baptist... registered 13 points in 40 minutes against NSU... dished out seven assists against Coastal Carolina at the Battle 4 Atlantis... netted 11 points on a trio of three-pointers, including one in the final seconds of regulation to send the game to overtime against No. 8 Florida, and played a career-high 45 minutes... registered 14 points, including a trio of three-pointers in the second half, to go along with his six assists in a win at UAB... led the team with nine points at New Mexico

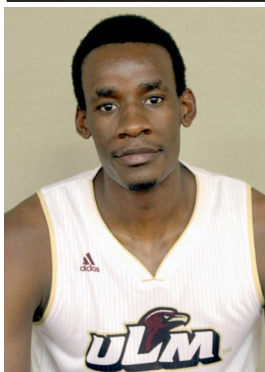
#### 2013-14 (FRESHMAN)

One of two players to start all 27 games for the Warhawks... led the team in minutes with 33.3 per game... played 40 minutes nine times and tied the school record of five in a row set in 1999-2000 by Maurice Bell... in conference play, ranked third in the league in minutes (36.1 mpg), seventh in three-point field goal percentage (.407) and top-10 in assists (2.9 apg)... tallied nine double-figure scoring games including a career-high 16 points at Georgia State where he hit four three-pointers... drained a career-high six field goals at UALR in the regular season finale and scored 15 points... dished out a career-high eight assists in an overtime victory at Northwestern State... pulled down a career-high six rebounds at home versus WKU... scored 10 points in the season opener at No. 5 Kansas... led the team in minutes in 12 games and assists in 10 games... averaged 6.9 points and 3.3 assists per game on the year



# ULM Warhawks Men's Basketball

## University of Louisiana at Monroe



### 12 Tylor Ongwae

Senior | Forward | 6-7 | 205  
Eldoret, Kenya | Ranger College

	Season-High	Career-High
Pts	25, vs. two times	27, two times
FG	10, two times	11, vs. ULL (1/4/14)
3FG	1, four times	4, at UTA (1/9/14)
FT	9, at TXST (1/10/15)	9, three times
Ast	9, vs. NSU (12/9/14)	9, vs. NSU (12/9/14)
Reb	10, vs. NSU (12/9/14)	11, two times
Blocks	2, two times	3, vs. ULL (1/4/14)
Steals	2, two times	5, vs. UALR (2/15/14)
Min	40, vs. UALR (1/17/15)	46, vs. ULL (1/4/14)



### 13 Major Deng

Junior | Forward | 6-10 | 190  
Adelaide, Australia | Indian Hills CC

	Season-High	Career-High
Pts	16, vs. Troy (1/15/15)	16, vs. Troy (1/15/15)
FG	6, at UTA (1/8/15)	6, at UTA (1/8/15)
3FG	3, two times	3, two times
FT	6, vs. Troy (1/15/15)	6, vs. Troy (1/15/15)
Ast	3, vs. UTA (1/22/15)	3, vs. UTA (1/22/15)
Reb	15, vs. UALR (1/17/15)	15, vs. UALR (1/17/15)
Blocks	4, at UAB (11/15/14)	4, at UAB (11/15/14)
Steals	2, three times	2, three times
Min	40, at Troy (1/29/15)	40, at Troy (1/29/15)

Opp	GS	Min	FG-FGA/Pct.	3FG-FGA	FT-FTA/PCT	O-D-T	PF-FO	A	TO	Blk	Stl	Pts/Avg
UAB	*	34	8-17/.471	0-0/.000	2-2/1.000	3-6-9	5-1	2	3	0	1	18/18.0
CH BAP	*	12	8-10/.800	0-0/.000	0-0/.000	4-1-5	0-0	0	0	1	2	16/17.0
Florida	*	39	8-14/.585	0-1/.000	3-6/.625	3-5-8	4-0	3	3	2	0	19/17.7
C. Car	*	28	3-10/.300	0-3/.000	1-1/1.000	0-4-4	1-0	2	3	0	0	7/15.0
RMU	*	32	2-6/.333	0-0/.000	3-3/1.000	3-1-4	3-0	1	2	1	1	7/13.4
La. Col	*	30	9-15/.600	0-0/.000	4-5/.800	6-3-9	2-0	1	3	0	1	22/14.8
NSU	*	39	6-8/.750	0-0/.000	7-8/.875	2-8-10	3-0	9	4	0	0	19/15.4
N.M.	*	30	2-11/.182	1-3/.333	3-4/.750	2-5-7	3-0	1	2	0	0	8/14.5
CE BAP	*	38	10-16/.625	1-3/.333	4-4/1.000	2-3-5	2-0	6	1	0	1	25/15.7
LSU-A	*	38	9-15/.600	1-2/.500	6-6/1.000	2-4-6	3-0	4	2	0	1	25/16.6
Samford	*	39	2-14/.143	0-1/.000	5-6/.833	3-3-6	2-0	4	2	0	0	9/15.9
Ga. St.	*	22	0-7/.000	0-0/.000	0-0/.000	0-0-0	3-0	2	1	0	1	0/14.6
Ark. St.	*	36	4-7/.571	0-0/.000	2-2/1.000	1-6-7	0-0	1	3	2	1	10/14.2
UTA	*	29	2-7/.286	0-1/.000	3-3/1.000	2-4-6	5-1	5	1	0	1	7/13.7
TXST	*	35	4-10/.400	0-0/.000	9-9/1.000	3-5-8	1-0	2	1	1	2	17/13.9
Troy	*	35	7-15/.467	1-5/.200	0-1/.000	5-5-10	1-0	1	1	1	0	15/14.0
UALR	*	40	4-11/.364	0-2/.000	5-5/1.000	3-6-9	3-0	3	1	1	0	13/13.9
UL-L	*	34	5-11/.455	0-0/.000	3-5/.600	1-4-5	1-0	2	1	0	2	13/13.9
UTA	*	37	4-14/.286	1-4/.250	0-0/.000	2-6-8	4-0	2	4	0	1	9/13.6
Ga. So.	*	37	4-13/.308	0-3/.000	9-10/.900	2-8-10	2-0	0	1	0	1	17/13.8
Troy	*	35	3-12/.250	0-2/.000	0-0/.000	6-3-9	3-0	5	2	0	0	6/13.4
USA												
UALR												
Ga. So.												
UL-L												
App. St.												
Ark. St.												
USA												
App. St.												
Ga. St.												
TXST												
TBA												
<b>Totals</b>	<b>21</b>	<b>699</b>	<b>104-243/.428</b>	<b>5-32/.156</b>	<b>69-80/.863</b>	<b>55-90-145</b>	<b>51-2</b>	<b>56</b>	<b>41</b>	<b>9</b>	<b>16</b>	<b>282/13.4</b>

2013-14 All-Conference Third-Team | 2013-14 NABC All-District Second-Team

2013-14 All-Louisiana Third-Team | 2013-14 College Sports Madness SBC Fourth-Team  
2014-15 (SENIOR)

Etched a double-double with 17 points and 10 rebs vs. Ga. Southern... team-high 13 points at UL-Lafayette... recorded 13 points and nine rebounds in 40 minutes vs. UALR... registered a double-double with 15 points and 10 rebs vs. Troy... scored 17 points on a perfect 9-9 FTs at TXST... season-high 25 points vs. Central Baptist... matched his season-high with 25 points against LSU-A... tallied a double-double with 19 points and 10 rebounds vs. NSU and neared a triple-double with a career-high nine assists... neared a double-double with 22 points and nine rebounds vs. Louisiana College... poured in 19 points and grabbed eight rebounds in an overtime thriller against No. 8 Florida and head coach Billy Donovan said he was the best player on the court... won SBC Player of the Week, College Sports Madness SBC Player of the Week and Warhawk of the Week on Nov. 18, 2014... drained 16 points in just 12 minutes on 8-for-10 shooting against Champion Baptist ... netted 18 points in a victory over UAB and neared a double-double with nine rebounds

2013-14 (JUNIOR)

Became just the second ULM student-athlete in school history to earn All-Conference honors from the Sun Belt since joining the league in 2006-0... finished fourth in the league in scoring with 17.5 points per game and reached double-figures in 17 of 18 SBC contests... recorded double-digits in 24 of 27 games on the season and played at least 40 minutes three times... registered at least 20 points nine times... posted three double-doubles, with a career-high 27 points against both UL-L and Georgia State at home... led the team in scoring in 17 games... notched a career-high five steals at home vs. UALR, the most by a Warhawk in a single game on the season... played a career-high 46 minutes in the overtime win over UL-L and made a career-high 11 FG's... etched a team-high 20 points against UTA at the SBC Championships... one of two players to start all 27 games on the season... second on the team in rebounds (5.8 rpg), three-pointers made (27), blocks (19) and steals (30)... named to the NABC Honors Court for outstanding achievement in the classroom

Opp	GS	Min	FG-FGA/Pct.	3FG-FGA	FT-FTA/PCT	O-D-T	PF-FO	A	TO	Blk	Stl	Pts/Avg
UAB	*	25	5-9/.556	2-4/.500	1-2/.500	1-4-5	1-0	2	0	4	2	13/13.0
CH BAP	*	20	2-4/.500	0-2/.000	3-3/1.000	0-6-6	2-0	2	2	2	1	7/10.0
Florida	*	35	1-7/.143	1-5/.200	0-0/.000	1-8-9	2-0	1	1	0	0	3/7.7
C. Car	*	35	5-10/.500	2-6/.333	2-2/1.000	1-9-10	2-0	0	0	3	0	14/9.3
RMU	*	19	0-4/.000	0-2/.000	2-2/1.000	1-0-1	3-0	0	2	0	0	2/7.8
La. Col	*	29	5-9/.556	1-2/.500	3-6/.500	2-9-11	2-0	2	2	2	1	14/8.8
NSU	*	26	5-10/.500	1-1/1.000	3-4/.750	3-4-7	1-0	1	1	2	0	14/9.6
N.M.	*	26	3-8/.375	0-4/.000	0-0/.000	2-4-6	4-0	1	0	1	2	6/9.1
CE BAP	*	34	3-7/.429	0-0/.000	5-6/.833	4-7-11	2-0	2	3	3	1	11/9.3
LSU-A	*	21	1-2/.500	0-0/.000	0-0/.000	1-6-7	0-0	0	1	3	0	2/8.6
Samford	*	16	0-4/.000	0-1/.000	0-0/.000	0-3-3	1-0	0	0	1	0	0/7.8
Ga. St.	*	17	3-9/.333	0-2/.000	0-1/.000	4-4-8	1-0	1	1	1	0	6/7.7
Ark. St.	*	20	4-7/.571	0-2/.000	2-3/.667	1-5-6	4-0	2	3	0	1	10/7.8
UTA	*	34	6-9/.667	3-6/.500	0-0/.000	3-2-5	1-0	2	3	2	0	15/8.4
TXST	*	34	2-4/.500	2-4/.500	1-2/.500	2-6-8	2-0	2	2	3	2	7/8.3
Troy	*	28	4-10/.400	2-5/.400	6-6/1.000	1-5-6	0-0	2	0	1	1	16/8.8
UALR	*	34	4-6/.667	2-3/.667	4-8/.500	4-11-15	4-0	2	2	1	0	14/9.1
UL-L	*	28	3-7/.429	1-3/.333	1-2/.500	0-5-5	2-0	1	2	1	0	8/9.0
UTA	*	34	4-8/.500	2-5/.400	0-0/.000	0-2-2	1-0	3	1	2	1	10/9.1
Ga. So.	*	29	2-3/.667	1-2/.500	2-2/1.000	4-3-7	2-0	0	2	2	0	7/9.0
Troy	*	40	5-12/.417	3-6/.500	2-2/1.000	1-1-2	3-0	0	2	2	0	15/9.2
USA												
UALR												
Ga. So.												
UL-L												
App. St.												
Ark. St.												
USA												
App. St.												
Ga. St.												
TXST												
TBA												
<b>Totals</b>	<b>20</b>	<b>584</b>	<b>67-149/.450</b>	<b>23-65/.354</b>	<b>37-51/.725</b>	<b>36-104-140</b>	<b>40-0</b>	<b>26</b>	<b>30</b>	<b>36</b>	<b>12</b>	<b>194/9.2</b>

JUNIOR (2014-15)

Registered 15 points in a career-high 40 minutes in an overtime win at Troy... grabbed a career-high 15 rebounds to go along with his 14 points and a double-double against UALR at home... netted career-highs of 16 points and six free throws (6-6) vs. Troy... tallied 15 points on 6-9 shooting including a trio of three-pointers in an overtime win over UT Arlington... posted a double-double with 11 points and 11 rebounds in the win over Central Baptist... recorded 14 points, seven rebounds and two blocks and hit a big three-pointer in the end to defeat Northwestern State... tallied a double-double with 14 points and 11 rebounds in the win over Louisiana College... registered a double-double with 14 points and 10 rebounds against Coastal Carolina in the Battle 4 Atlantis... poured in 13 points, including a pair of three-pointers, in a win over UAB and also blocked four shots

PREVIOUS SCHOOL

Led Indian Hills Community College to the 2014 Regional and District Championships... guided the program to a 34-3 record in 2014 and a combined 60-7 record in his two years... hit a three-pointer against Southeastern for the win in double overtime in 2013... netted a career-high 16 points against John Wood CC





# ULM Warhawks Men's Basketball

## University of Louisiana at Monroe



### 20 Chinedu Amajoyi

Senior Guard | 6-3 | 195  
Rancho Cucamonga, Calif. | Kilgore College

	Season-High	Career-High
Pts	8, vs. CHBC (11/17/14)	12, vs. USA (2/27/14)
FG	4, vs. CHBC (11/17/14)	4, vs. USA (2/27/14)
3FG	N/A	3, two times
FT	2, at GSU (12/30/14)	10, vs. ASU (1/30/14)
Ast	6, vs. CHBC (11/17/14)	6, vs. CHBC (11/17/14)
Reb	4, at UAB (11/15/14)	8, two times
Blocks	N/A	1, two times
Steals	1, at GSU (12/30/14)	2, two times
Min	19, two times	36, at ASU (3/6/14)

Opp	GS	Min	FG-FGA/Pct.	3FG-FGA	FT-FTA/PCT	O-D-T	PF-FO	A	TO	Blk	Stl	Pts/Avg
UAB		8	0-3/.000	0-1/.000	0-0/.000	1-3-4	1-0	1	2	0	0	0/0.0
CH BAP		19	4-7/.571	0-2/.000	0-0/.000	0-2-2	3-0	6	0	0	0	8/4.0
Florida					DNP							
C. Car		3	0-0/.000	0-0/.000	0-0/.000	0-0-0	0-0	0	1	0	0	0/2.7
RMU		1	0-0/.000	0-0/.000	0-0/.000	0-0-0	0-0	0	0	0	0	0/2.0
La. Col		10	0-1/.000	0-1/.000	0-0/.000	0-0-0	1-0	1	2	0	0	0/1.6
NSU					DNP							
N.M.		8	0-1/.000	0-0/.000	0-0/.000	0-1-1	0-0	1	1	0	0	0/1.3
CE BAP		2	0-2/.000	0-1/.000	0-0/.000	0-0-0	1-0	0	0	0	0	0/1.1
LSU-A					DNP							
Samford		13	0-1/.000	0-0/.000	0-0/.000	0-1-1	1-0	0	0	0	0	0/1.0
Ga. St.	*	19	0-0/.000	0-0/.000	2-2/1.000	0-0-0	0-0	1	1	0	1	2/1.1
Ark. St.					DNP							
UTA		4	0-1/.000	0-1/.000	0-0/.000	0-0-0	0-0	0	0	0	0	0/1.0
TXST					DNP							
Troy					DNP							
UALR					DNP							
UL-L		3	0-0/.000	0-0/.000	0-0/.000	0-0-0	0-0	1	0	0	0	0/0.9
UTA					DNP							
Ga. So.					DNP							
Troy		4	0-1/.000	0-1/.000	0-0/.000	0-0-0	0-0	1	0	0	0	0/0.8
USA												
UALR												
Ga. So.												
UL-L												
App. St.												
Ark. St.												
USA												
App. St.												
Ga. St.												
TXST												
TBA												
<b>Totals</b>	<b>1</b>	<b>94</b>	<b>4-17/.235</b>	<b>0-7/.000</b>	<b>2-2/1.000</b>	<b>1-7-8</b>	<b>7-0</b>	<b>12</b>	<b>7</b>	<b>0</b>	<b>1</b>	<b>10/0.8</b>

#### 2014-15 (SENIOR)

Scored eight points in 19 minutes in a win over Champion Baptist

#### 2013-14 (JUNIOR)

Finished top-10 in the league in three-point field goal percentage at .405 (15-37)... started in 11 of ULM's last 12 games and doubled his scoring average in that span... posted career-highs of 12 points and eight rebounds against South Alabama at home... became the only ULM student-athlete to hit 10 free throws in a game on the season as he went 10-12 at home against Arkansas State... registered three double-figure scoring games... played a career-high 36 minutes at Arkansas State and pulled down eight rebounds... drained a trio of three-pointers at both Texas State and Georgia State... averaged 4.1 points per game and made 22 appearances

#### PREVIOUS SCHOOL

Played two seasons at Kilgore College and led the Rangers to a 27-6 overall record and an East Texas JUCO Conference Championship ... Also guided Kilgore to the quarterfinals of the 2013 National Junior College Athletic Association National Tournament and started every game ... Averaged 5.9 points, 2.7 rebounds and 1.9 assists in 33 appearances ... Tallied five double-figure scoring games including a career-high 17 points on two separate occasions ... Shot .807 percent from the free-throw line

#### HIGH SCHOOL

An All-Conference honoree at Los Osos High School ... Averaged 15 points and seven rebounds per game while shooting .857 from the free throw line ... 1,000 point scorer in his career



### 22 Lance Richard

R-Freshman | Guard | 5-10 | 175  
Monroe, La. | Sterlington HS

	Season-High	Career-High
Pts	8, vs. CHBC (11/17/14)	8, vs. CHBC (11/17/14)
FG	3, vs. CHBC (11/17/14)	3, vs. CHBC (11/17/14)
3FG	2, vs. CHBC (11/17/14)	2, vs. CHBC (11/17/14)
FT	N/A	N/A
Ast	N/A	N/A
Reb	3, vs. CHBC (11/17/14)	3, vs. CHBC (11/17/14)
Blocks	1, vs. RMU (11/17/14)	1, vs. RMU (11/17/14)
Steals	1, two times	1, two times
Min	15, vs. CHBC (11/17/14)	15, vs. CHBC (11/17/14)

Opp	GS	Min	FG-FGA/Pct.	3FG-FGA	FT-FTA/PCT	O-D-T	PF-FO	A	TO	Blk	Stl	Pts/Avg
UAB		1	0-0/.000	0-0/.000	0-0/.000	0-0-0	0-0	0	0	0	0	0/0.0
CH BAP		15	3-8/.375	2-7/.286	0-0/.000	0-3-3	1-0	0	1	0	1	8/4.0
Florida		1	0-0/.000	0-0/.000	0-0/.000	0-0-0	0-0	0	0	0	0	0/2.7
C. Car		1	0-2/.000	0-2/.000	0-0/.000	0-0-0	0-0	0	0	0	0	0/2.0
RMU		5	1-2/.500	1-2/.500	0-0/.000	0-0-0	2-0	0	0	1	0	3/2.2
La. Col		5	1-3/.333	1-3/.333	0-0/.000	0-0-0	0-0	0	0	0	0	3/2.3
NSU					DNP							
N.M.		1	0-1/.000	0-1/.000	0-0/.000	0-0-0	0-0	0	0	0	0	0/2.0
CE BAP		3	0-1/.000	0-1/.000	0-0/.000	0-0-0	0-0	0	0	0	1	0/1.8
LSU-A		0+	0-1/.000	0-1/.000	0-0/.000	0-0-0	0-0	0	0	0	0	0/1.6
Samford		2	0-0/.000	0-0/.000	0-0/.000	0-0-0	0-0	0	0	0	0	0/1.4
Ga. St.		5	1-2/.500	1-2/.500	0-0/.000	0-0-0	0-0	0	1	0	0	3/1.5
Ark. St.					DNP							
UTA		6	1-2/.500	1-2/.500	0-0/.000	0-1-1	1-0	0	0	0	0	3/1.7
TXST					DNP							
Troy					DNP							
UALR					DNP							
UL-L					DNP							
UTA					DNP							
Ga. So.		4	0-2/.000	0-2/.000	0-0/.000	0-1-1	0-0	0	0	0	0	0/1.5
Troy		0+	0-1/.000	0-0/.000	0-0/.000	1-0-1	0-0	0	0	0	0	0/1.4
USA												
UALR												
Ga. So.												
UL-L												
App. St.												
Ark. St.												
USA												
App. St.												
Ga. St.												
TXST												
TBA												
Totals		49	7-25/.280	6-23/.261	0-0/.000	1-5-6	4-0	0	2	1	2	20/1.4

#### 2014-15 (SOPHOMORE)

Netted a career-high eight points and hit a pair of three-pointers in a win over Champion Baptist... hit a three-pointer in an overtime win over UT Arlington... drilled a three-pointer and also rejected a shot against Robert Morris at the Battle 4 Atlantis

#### 2013-14 (FRESHMAN)

Redshirted... will still have four years of eligibility remaining

#### HIGH SCHOOL

Played three seasons at Sterlington High School ... Guided the Panthers to a 25-8 record as a senior and a second round appearance in the Louisiana High School Athletic Association playoffs ... Averaged 12 points and 3 assists per game his senior year ... Earned All-District honors from 2010-2013





# ULM Warhawks Men's Basketball

## University of Louisiana at Monroe



### 32 Justin Roberson

Junior | Guard | 6-1 | 185  
Natchitoches, La. | Western Texas

	Season-High	Career-High
Pts	19, vs. CEBC (12/16/14)	19, vs. CEBC (12/16/14)
FG	8, vs. CEBC (12/16/14)	8, vs. CEBC (12/16/14)
3FG	1, five times	1, five times
FT	8, vs. UALR (1/17/15)	8, vs. UALR (1/17/15)
Ast	6, vs. RMU (11/27/14)	6, vs. RMU (11/27/14)
Reb	7, two times	7, two times
Blocks	2, vs. RMU (11/27/14)	2, vs. RMU (11/27/14)
Steals	4, at TXST (1/10/15)	4, at TXST (1/10/15)
Min	40, at Troy (1/29/15)	40, at Troy (1/29/15)

Opp	GS	Min	FG-FGA/Pct.	3FG-FGA	FT-FTA/PCT	O-D-T	PF-FO	A	TO	Blk	Stl	Pts/Avg
UAB	*	32	6-11/.545	0-0/.000	6-6/1.000	1-3-4	1-0	5	1	0	2	18/18.0
CH BAP	*	15	4-5/.800	0-0/.000	1-2/.500	0-1-1	1-0	2	1	0	3	9/13.5
Florida	*	26	1-6/.167	0-1/.000	0-0/.000	0-1-1	5-1	0	3	0	2	2/9.7
C. Car	*	29	4-7/.571	1-3/.333	2-2/1.000	0-7-7	2-0	2	2	0	0	11/10.0
RMU	*	31	6-10/.600	0-2/.000	0-0/.000	0-4-4	3-0	6	3	2	0	12/10.4
La. Col	*	26	5-7/.714	0-1/.000	2-2/1.000	0-3-3	4-0	1	5	0	2	12/10.7
NSU	*	28	4-6/.667	0-1/.000	0-2/.000	0-3-3	4-0	2	3	0	1	8/10.3
N.M.	*	32	3-11/.273	0-1/.000	0-1/.000	0-4-4	0-0	1	2	0	2	6/9.8
CE BAP	*	31	8-12/.667	1-2/.500	2-2/1.000	0-4-4	2-0	4	0	0	2	19/10.8
LSU-A	*	30	2-6/.333	0-0/.000	2-3/.667	0-7-7	5-1	4	2	0	0	6/10.3
Samford	*	25	1-10/.100	1-1/1.000	0-0/.000	3-3-6	0-0	2	3	0	1	3/9.6
Ga. St.		13	0-5/.000	0-1/.000	0-1/.000	0-0-0	2-0	0	0	0	0	0/8.8
Ark. St.		19	4-7/.571	0-0/.000	2-3/.667	0-1-1	2-0	1	0	0	0	10/8.9
UTA		23	2-10/.200	1-3/.333	0-0/.000	1-5-6	5-1	1	1	0	0	5/8.6
TXST		17	5-9/.556	0-1/.000	0-0/.000	0-2-2	5-1	2	3	0	4	10/8.7
Troy		26	4-9/.444	1-1/1.000	0-0/.000	0-1-1	1-0	0	0	0	1	9/8.8
UALR		24	2-6/.333	0-3/.000	8-9/.889	0-3-3	1-0	1	3	0	0	12/8.9
UL-L		28	3-7/.429	0-0/.000	2-5/.400	1-5-6	3-0	4	1	1	1	8/8.9
UTA		27	2-10/.200	0-1/.000	3-4/.750	3-2-5	2-0	3	3	0	0	7/8.8
Ga. So.		21	2-6/.333	0-3/.000	1-2/.500	1-4-5	2-0	3	1	0	0	5/8.6
Troy	*	40	2-11/.182	0-1/.000	5-6/.833	1-4-5	1-0	1	1	1	3	9/8.6
USA												
UALR												
Ga. So.												
UL-L												
App. St.												
Ark. St.												
USA												
App. St.												
Ga. St.												
TXST												
TBA												
<b>Totals</b>	<b>12</b>	<b>543</b>	<b>70-171/.409</b>	<b>5-26/.192</b>	<b>36-50/.720</b>	<b>11-67-.78</b>	<b>51-4</b>	<b>45</b>	<b>38</b>	<b>4</b>	<b>24</b>	<b>181/8.6</b>

#### JUNIOR (2014-15)

Put in 12 points and drained a career-high eight free throws (8-9) vs. UALR at home... scored 10 points against both Arkansas State and Texas State... career-high 19 points and eight made field goals in the win over Central Baptist... reached double-figures with 12 points on 5-7 shooting against Louisiana College... registered a team and game-high of 18 points, including a perfect 6-6 FT, to go along with his five assists in a win over UAB... recorded a career-high three steals against Champion Baptist... netted 11 points and grabbed a career-high seven rebounds against Coastal Carolina... drained 12 points with a career-high six assists and two blocks against Robert Morris

#### PREVIOUS SCHOOL

Led Western Texas Junior College to a 23-8 record and averaged 14.2 points, 3.5 rebounds, 4.0 assists and 2.0 steals per game... named to the All-Western Texas Conference First-Team... memorable dunk over a 6-8 post player after driving down the lane

#### HIGH SCHOOL

Lettered in both basketball and football at Natchitoches Central HS and earned All-State in both sports

### Individual Career Totals for Returning Student-Athletes

*Only includes statistics at ULM*

#### Points

T. Ongwae	720
M. Williams	388
N. Coppola	367
D. Harvey	154
C. Amajoyi	101

#### Steals

T. Ongwae	46
N. Coppola	32
M. Williams	20
D. Harvey	17
C. Amajoyi	10

#### Field Goals M-A

T. Ongwae	256-604
M. Williams	160-305
N. Coppola	130-340
D. Harvey	61-110
C. Amajoyi	29-86

#### Free Throws M-A

T. Ongwae	187-220
M. Williams	66-108
N. Coppola	51-78
D. Harvey	29-50
C. Amajoyi	28-38

#### Rebounds

T. Ongwae	300
M. Williams	214
D. Harvey	157
N. Coppola	128
C. Amajoyi	75

#### Three-Pointers M-A

N. Coppola	54-158
T. Ongwae	32-132
C. Amajoyi	15-47
M. Williams	2-8

#### Assists

N. Coppola	171
T. Ongwae	95
D. Harvey	24
C. Amajoyi	23
M. Williams	18

#### Games/Starts

T. Ongwae	48/48
N. Coppola	48/48
D. Harvey	48/9
M. Williams	45/36
C. Amajoyi	34/15

#### Blocks

M. Williams	41
T. Ongwae	28
D. Harvey	21
C. Amajoyi	2

#### Minutes

N. Coppola	1627
T. Ongwae	1552
M. Williams	1041
D. Harvey	671
C. Amajoyi	475

### ULM's 2014-15 Record When it Has...

#### Five Double-Figure Scorers (2-0)

vs. Northwestern State  
vs. UALR

#### Two Double-Figure Scorers (2-6)

at No. 8 Florida  
vs. Coastal Carolina  
vs. Robert Morris  
at Samford  
vs. Troy (win)  
vs. UT Arlington  
vs. Georgia Southern  
at Troy (win)

#### Four Double-Figure Scorers (5-0)

at UAB  
vs. Champion Baptist  
vs. Louisiana College  
vs. Central Baptist  
vs. Arkansas State

#### Three Double-Figure Scorers (3-0)

vs. LSU-Alexandria  
at UT Arlington  
at Texas State

#### One Double-Figure Scorer (1-0)

at UL-Lafayette

#### No Double-Figure Scorers (0-2)

at New Mexico  
at Georgia State



# ULM Warhawks Men's Basketball

University of Louisiana at Monroe

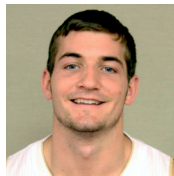


## Media Roster



### **0 Marvin Williams**

Senior | Center  
6-8 | 245  
Memphis, Tenn.  
NW Florida State College



### **11 Nick Coppola**

Sophomore | Guard  
5-11 | 190  
Richmond, Va.  
Benedictine Prep



### **1 Alex Brown**

Freshman | Guard  
6-4 | 185  
Vernon, Fla.  
Vernon HS



### **12 Tylor Ongwae**

Senior | Forward  
6-7 | 205  
Eldoret, Kenya  
Ranger College



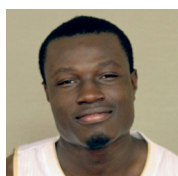
### **2 DeMondre Harvey**

Sophomore | Forward  
6-7 | 210  
Minden, La.  
Pearl River CC



### **13 Majok Deng**

Junior | Forward  
6-10 | 190  
Adelaide, Australia  
Indian Hills CC



### **3 Prince Cooper**

Sophomore | Guard  
6-4 | 215  
Freeport, Bahamas  
Miami-Dade College



### **20 Chinedu Amajoyi**

Senior | Guard  
6-3 | 195  
Rancho Cucamonga, Calif.  
Kilgore College



### **4 Mack Foster**

Junior | Guard  
6-2 | 185  
Beulah, Miss.  
East Mississippi CC



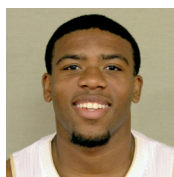
### **22 Lance Richard**

R-Freshman | Guard  
5-10 | 170  
Monroe, La.  
Sterlington HS



### **5 Jamaal Samuel**

Junior | Forward  
6-9 | 205  
New Orleans, La.  
Illinois State



### **32 Justin Roberson**

Junior | Guard  
6-1 | 185  
Natchitoches, La.  
Western Texas



### **10 Roderick Taylor**

Freshman | Forward  
6-8 | 210  
Harker Heights, Texas  
Harker Heights HS



### **Head Coach Keith Richard**

ULM '82  
Fifth Year at ULM  
14th Year Overall  
Baton Rouge, La.